

Whom We Serve

The Coon Creek Watershed District either directly or indirectly serves all the people of the watershed as well as those people in the State of Minnesota and nation who may be affected by the increases or decreases in water or water quality resulting from our actions.

Communities and Boundaries

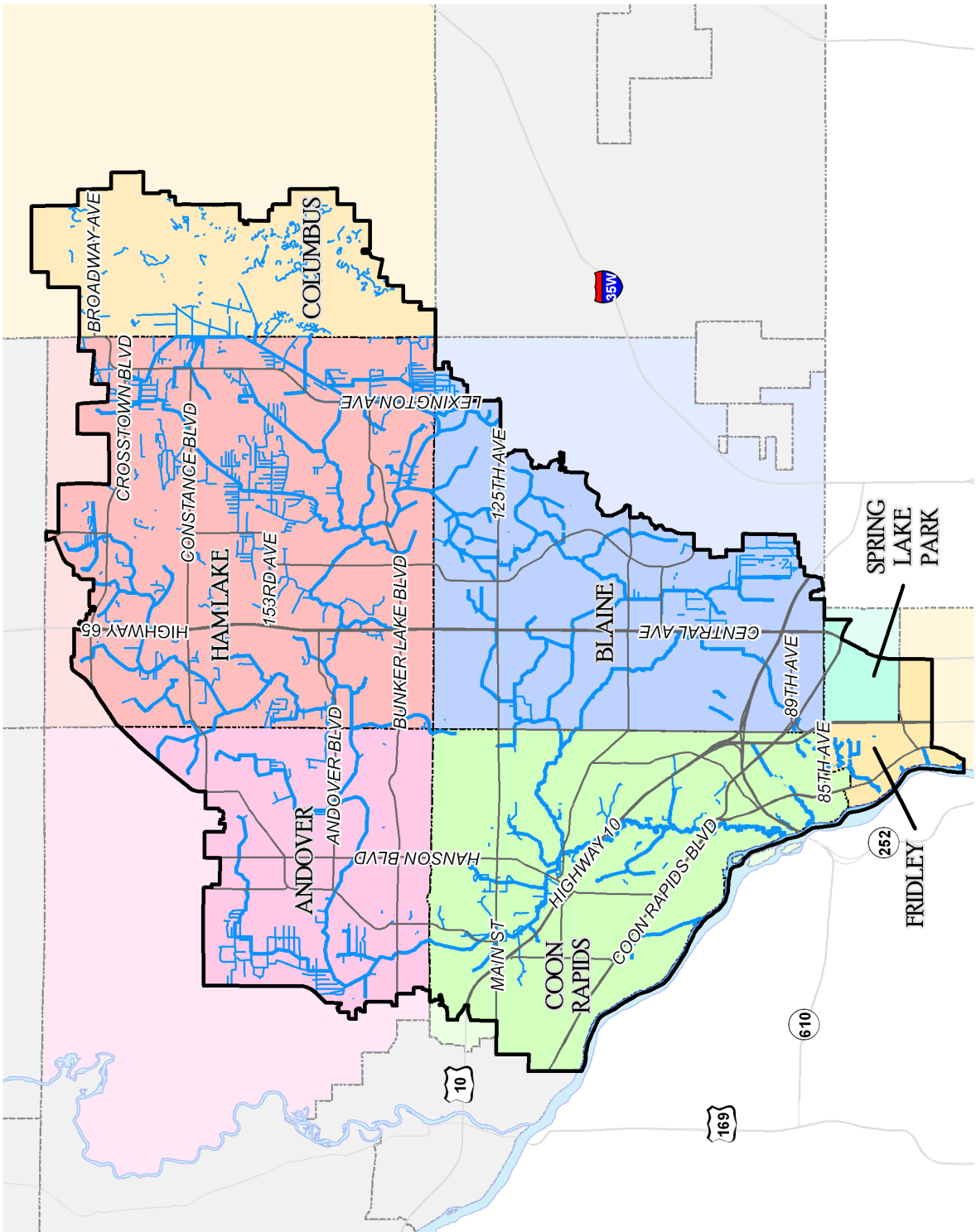
The Coon Creek Watershed District (CCWD) is located in Anoka County Minnesota. The legal boundary of the CCWD encompasses approximately 107 square miles of urban and rural land involving portions of seven cities:

Cities of the Coon Creek Watershed District

City	Acres	Sq Miles	Pct of District	% of City in CCWD
Andover	9,488	15	14%	43%
Blaine	13,931	22	21%	64%
Columbus	7,096	11	10%	23%
Coon Rapids	14,219	22	21%	99%
Fridley	1,374	2	2%	21%
Ham Lake	20,651	33	30%	90%
Spring Lake Park	890	2	2%	68%
Total	68,480	107	100%	

The legal boundary of the CCWD and member cities is shown in **Figure 1-1**.

Figure 1.1



Primary Service Audiences

The people who make decisions about water and related resource use within the Coon Creek Watershed are our primary service audience.

We provide evidence-based technical and policy assistance as well as leadership to those individuals and entities who wish to act as stewards in making good decisions about their water and related resources.

Our primary service audiences are:

- Citizens** Individuals or groups that:
- Own or operate land that depends on drainage (removal of water from the soil profile) to produce or provide goods or services, **OR**
 - Influence or have an effect on the quantity or quality of water within the watershed through activities that affect the land and adjacent waters.

Councils, Boards & Commissions Public bodies that enact policy and allocate resources that pertain to the management of water and related land resources.

Water Resource Professionals Individuals who influence or have an effect on the quantity or quality of water within the watershed either through design, field determinations, or conduct of their work be they public or private.

These general groups ask for and require different products and services from the watershed and from the District. And, within each audience group there are segments with different needs.

Partnerships and Coordination

Achieving comprehensive water and related resource management concurrent with meeting the diverse needs of the District’s stakeholders cannot be done in a vacuum or along jurisdictional boundaries. With a watershed approach to management, future resource decisions will be more community based, collaboratively designed and regional in scope. Coordination has taken place with other water and land management agencies and will continue. State, county, and local governments, private landowners and environmental and industry groups are also key partners in providing information and seeking common ground.