

COON CREEK WATERSHED DISTRICT



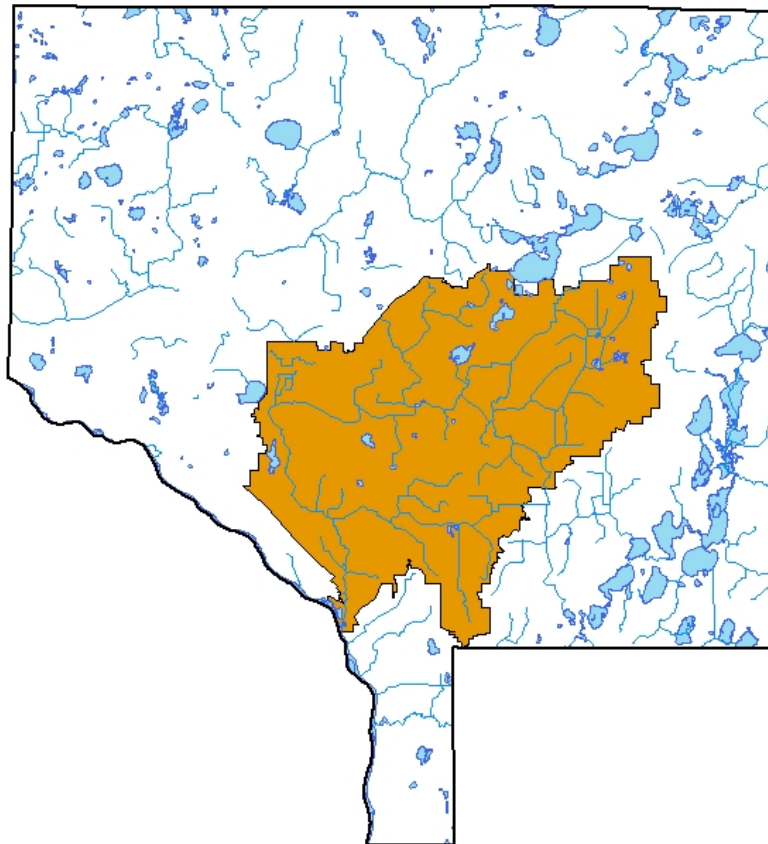
Financial Report

Year Ended December 31, 2008

**Prepared by Finance and Central Services Division of Anoka County, Minnesota
Cevin Petersen, Division Manager**

COON CREEK WATERSHED DISTRICT

Financial Report
Year Ended December 31, 2008



Prepared by Finance and Central Services Division of Anoka County, Minnesota
Cevin Petersen, Division Manager
2100 3rd Avenue
Anoka, Minnesota 55303-2265

**COON CREEK WATERSHED DISTRICT
ANOKA, MINNESOTA**

This page left blank intentionally.

**COON CREEK WATERSHED DISTRICT
ANOKA COUNTY, MINNESOTA**

TABLE OF CONTENTS

	Reference	Page
Introductory Section		
Organization		1
Financial Section		
Independent Auditor's Report		2
Management's Discussion and Analysis		4
Basic Financial Statements		
Governmental Funds Balance Sheet and Governmental Activities - Statement of Net Assets	Exhibit 1	9
Governmental Funds Statement of Revenues, Expenditures, and Changes in Fund Balance and Governmental Activities - Statement of Activities	Exhibit 2	11
Notes to the Financial Statements		13
Required Supplementary Information		
Budgetary Comparison Schedules		
General Fund	Schedule 1	28
Operations and Maintenance Special Revenue Fund	Schedule 2	29
Ditch Special Revenue Fund	Schedule 3	30
Notes to the Required Supplementary Information		31
Other Supplementary Information		
Agency Fund		32
Statement of Changes in Assets and Liabilities	Statement 1	33

**COON CREEK WATERSHED DISTRICT
ANOKA, MINNESOTA**

This page left blank intentionally.

INTRODUCTORY SECTION

**COON CREEK WATERSHED DISTRICT
ANOKA, MINNESOTA**

This page left blank intentionally.

**COON CREEK WATERSHED DISTRICT
ANOKA COUNTY, MINNESOTA**

**ORGANIZATION
2008**

<u>Board of Managers</u>	<u>Term Expires</u>
Warren Hoffman, President	May 2010
Joseph Marvin, Vice President	May 2011
Bryon Westlund, Treasurer	May 2009
Ted Capra, Secretary	May 2011
Bill MacNally	May 2010
<u>District Administrator</u>	
Tim Kelly	Indefinite

**COON CREEK WATERSHED DISTRICT
ANOKA, MINNESOTA**

This page left blank intentionally.

**COON CREEK WATERSHED DISTRICT
ANOKA, MINNESOTA**

FINANCIAL SECTION

**COON CREEK WATERSHED DISTRICT
ANOKA, MINNESOTA**

This page left blank intentionally.



REBECCA OTTO
STATE AUDITOR

STATE OF MINNESOTA

OFFICE OF THE STATE AUDITOR

SUITE 500
525 PARK STREET
SAINT PAUL, MN 55103-2139

(651) 296-2551 (Voice)
(651) 296-4755 (Fax)
state.auditor@state.mn.us (E-Mail)
1-800-627-3529 (Relay Service)

INDEPENDENT AUDITOR'S REPORT

Board of Managers
Coon Creek Watershed District

We have audited the accompanying financial statements of the governmental activities, each major fund, and the remaining fund information of the Coon Creek Watershed District as of and for the year ended December 31, 2008, which collectively comprise the District's basic financial statements as listed in the table of contents. These financial statements are the responsibility of the Coon Creek Watershed District's management. Our responsibility is to express opinions on these financial statements based on our audit.

We conducted our audit in accordance with auditing standards generally accepted in the United States of America. Those standards require that we plan and perform the audit to obtain reasonable assurance about whether the financial statements are free of material misstatement. An audit includes examining, on a test basis, evidence supporting the amounts and disclosures in the financial statements. An audit also includes assessing the accounting principles used and significant estimates made by management, as well as evaluating the overall financial statement presentation. We believe that our audit provides a reasonable basis for our opinions.

In our opinion, the financial statements referred to above present fairly, in all material respects, the respective financial position of the governmental activities, each major fund, and the remaining fund information of the Coon Creek Watershed District as of December 31, 2008, and the respective changes in financial position thereof for the year then ended in conformity with accounting principles generally accepted in the United States of America.

The Management's Discussion and Analysis and the required supplementary information listed in the table of contents are not a required part of the basic financial statements but are supplementary information required by the Governmental Accounting Standards Board. We have applied certain limited procedures, which consisted principally of inquiries of management regarding the methods of measurement and presentation of the required supplementary information. However, we did not audit the information and express no opinion on it.

Page 2

Our audit was made for the purpose of forming opinions on the financial statements that collectively comprise the Coon Creek Watershed District's basic financial statements. The supplementary information is presented for purposes of additional analysis and is not a required part of the basic financial statements. Such information has been subjected to the auditing procedures applied in the audit of the basic financial statements and, in our opinion, is fairly stated in all material respects in relation to the basic financial statements taken as a whole.



REBECCA OTTO
STATE AUDITOR



GREG HIERLINGER, CPA
DEPUTY STATE AUDITOR

December 17, 2009

MANAGEMENT'S DISCUSSION AND ANALYSIS

**COON CREEK WATERSHED DISTRICT
ANOKA, MINNESOTA**

This page left blank intentionally.

**COON CREEK WATERSHED DISTRICT
ANOKA COUNTY, MINNESOTA**

**MANAGEMENT'S DISCUSSION AND ANALYSIS
DECEMBER 31, 2008
(Unaudited)**

This section of the annual financial report presents our Management's Discussion and Analysis (MD&A) of the Coon Creek Watershed District's (District's) financial performance during the fiscal year that ended December 31, 2008.

FINANCIAL HIGHLIGHTS

Key financial highlights for the 2008 fiscal year include the following:

- Total net assets are \$732,504. Total assets are \$2,425,680, and total liabilities are \$1,693,176 for the year ended December 31, 2008.
- Overall government-wide revenues totaled \$776,593 and were \$151,153 less than expenses.
- The General Fund's fund balance decreased \$97,912, or 12.8 percent, from the prior year.

OVERVIEW OF THE FINANCIAL STATEMENTS

The financial section of the annual report consists of four parts--Independent Auditor's Report; required supplementary information, which includes the MD&A (this section) and the budgetary comparison schedule; the basic financial statements; and supplementary information.

This MD&A is intended to serve as an introduction to the basic financial statements. The District's basic financial statements consist of two statements, which combine government-wide financial statements and fund financial statements, and notes to the financial statements. The MD&A (this section) and the budgetary comparison schedules are required to accompany the basic financial statements and, therefore, are included as required supplementary information.

The first several columns of each of the first two statements present governmental fund data, which focus on how money flows in and out and the balances left at year-end that are available for spending. These columns are reported using an accounting method called modified accrual accounting. This method measures cash and all other financial assets that can be readily converted to cash. These columns provide a detailed short-term view of the general government operations and the basic services it provides. Governmental fund information helps you determine whether there are more or fewer financial resources that can be spent in the near future to finance programs. We reconcile the relationship (or differences) between governmental funds and governmental activities (reported in the last column) in a column of each statement.

The final column in each of the first two statements presents the Statement of Net Assets and the Statement of Activities, which provide information about the activities of the District as a whole and present a longer-term view of finances. These columns tell how these services were financed in the short term as well as what remains for future spending. These columns include all assets and liabilities of the District, including long-term activity. All of the current year's revenues and expenses are accounted for in the Statement of Activities regardless of when cash is received or paid.

FINANCIAL ANALYSIS OF THE DISTRICT AS A WHOLE

Net assets--the net assets were \$732,504 on December 31, 2008.

Table 1
Net Assets

	<u>2008</u>	<u>2007</u>	<u>Percent Change (%)</u>
Assets			
Cash and investments	\$ 2,361,185	\$ 2,498,878	-5.5
Taxes receivable	21,234	20,482	3.7
Due from other governments	23,806	24,907	-4.4
Capital assets, net	<u>19,455</u>	<u>18,124</u>	7.3
Total Assets	<u>\$ 2,425,680</u>	<u>\$ 2,562,391</u>	-5.3
Liabilities			
Accounts payable	\$ 22,232	\$ 1,859	1,095.9
Salaries payable	8,823	6,260	40.9
Contracts payable	-	17,182	-100.0
Due to other governments	82,550	59,278	39.3
Funds held in trust	1,547,607	1,568,554	-1.3
Long-term liabilities			
Due in more than one year	<u>31,964</u>	<u>25,601</u>	24.9
Total Liabilities	<u>\$ 1,693,176</u>	<u>\$ 1,678,734</u>	0.9
Net Assets			
Invested in capital assets	\$ 19,455	\$ 18,124	7.3
Unrestricted	<u>713,049</u>	<u>865,533</u>	-17.6
Total Net Assets	<u>\$ 732,504</u>	<u>\$ 883,657</u>	-17.1

Table 2
Change in Net Assets
Governmental Activities

	<u>2008</u>	<u>2007</u>	<u>Percent Change (%)</u>
Revenues			
Program revenues			
Charges, fees, fines and others	\$ 36,877	\$ 60,478	-39.0
Operating grants and contributions	18,915	-	100.0
General revenues			
Property taxes	635,487	689,057	-7.8
State aid	31,643	38,842	-18.5
Investment income	<u>53,671</u>	<u>107,173</u>	-49.2
Total Revenues	\$ 776,593	\$ 895,550	-13.3
Expenses			
Program expenses			
Conservation of natural resources	<u>927,746</u>	<u>668,024</u>	38.9
Increase (Decrease) in Net Assets	\$ (151,153)	\$ 227,526	-166.4
Net Assets - January 1	<u>883,657</u>	<u>656,131</u>	34.4
Net Assets - December 31	<u><u>732,504</u></u>	<u><u>883,657</u></u>	-17.1

CAPITAL ASSETS

As of December 31, 2008, the District had \$19,455 invested in net capital assets. (See Table 3.) This amount represents a net increase (including additions and deductions) of \$1,331, or 7.3 percent, from last year.

Table 3
Capital Assets at Year-End

	<u>2008</u>	<u>2007</u>
Machinery and equipment	\$ 64,258	\$ 49,639
Less: accumulated depreciation	<u>(44,803)</u>	<u>(31,515)</u>
Net Capital Assets	<u><u>\$ 19,455</u></u>	<u><u>\$ 18,124</u></u>

FINANCIAL ANALYSIS OF THE DISTRICT AT THE FUND LEVEL

The financial performance of the District as a whole is reflected in its governmental funds as well. As the District completed the year, its governmental funds reported a combined fund balance of \$723,779.

Revenues for the District's governmental funds were \$775,841, while total expenditures were \$922,714.

GENERAL FUND

The General Fund includes the primary operations of the District in providing services to citizens and some capital outlay projects.

The following schedule presents a summary of General Fund revenues:

**Table A-4
General Fund Revenues**

Function	Year Ended December 31		Change	
	2008	2007	Increase (Decrease)	Percent (%)
Taxes	\$ 634,735	\$ 671,078	\$ (36,343)	-5.4
Licenses and permits	23,176	42,411	(19,235)	-45.4
Intergovernmental	50,558	38,198	12,360	32.4
Charges for services	12,506	17,098	(4,592)	-26.9
Investment income	53,671	107,173	(53,502)	-49.9
Miscellaneous and other	1,195	957	238	24.9
Total General Fund Revenues	<u>\$ 775,841</u>	<u>\$ 876,915</u>	<u>\$ (101,074)</u>	-11.6

Total General Fund revenues decreased by \$101,074, or 11.6 percent, from the previous year. The mix of property tax and state aid can change significantly from year to year. The District's tax revenue decreased by \$36,343 and state aid, which is a component of intergovernmental revenue, decreased by \$7,200, due to reductions in the tax levy and state aid receipts. An environment of falling interest rates in 2008 along with the cash generated by the tax levy resulted in decreased interest income of near 50 percent. The decrease in licenses and permits is directly related to the decline in real estate development activity.

The following schedule presents a summary of General Fund expenditures:

**Table A-5
General Fund Expenditures**

Function	Year Ended December 31		Change	
	2008	2007	Increase (Decrease)	Percent (%)
Conservation of natural resources	\$ 873,753	\$ 653,772	\$ 219,981	33.6

General Fund Budgetary Highlights

- Actual revenues were \$53,879 more than expected.
- Actual expenditures were \$42,421 under the budgeted amount.
- No revisions were made to the original adopted budget.

FACTORS BEARING ON THE FUTURE AND NEXT YEAR’S BUDGETS AND RATES

The District relies on property tax levies, authorized by underlying state statutes, for a significant portion of its revenue. Continuing surges in land development projects will likely cause the District’s activities and expenditures to increase during the next two to five years.

CONTACTING THE DISTRICT’S FINANCIAL MANAGEMENT

This financial report is designed to give a general overview of the District’s finances and to show the District’s accountability for the money it receives. If you have questions about this report or need additional financial information, contact the District Administrator, Tim Kelly, 12301 Central Avenue N.E., Suite 100, Blaine, Minnesota 55434.

**COON CREEK WATERSHED DISTRICT
ANOKA, MINNESOTA**

This page left blank intentionally.

BASIC FINANCIAL STATEMENTS

**COON CREEK WATERSHED DISTRICT
ANOKA, MINNESOTA**

This page left blank intentionally.

**COON CREEK WATERSHED DISTRICT
ANOKA COUNTY, MINNESOTA**

EXHIBIT 1

**GOVERNMENTAL FUNDS BALANCE SHEET AND
GOVERNMENTAL ACTIVITIES - STATEMENT OF NET ASSETS
WITH ADJUSTMENTS TO CONVERT MODIFIED TO FULL ACCRUAL
DECEMBER 31, 2008**

	General Fund	Operations and Maintenance	Ditch	Total	Adjustments	Governmental Activities
<u>Assets</u>						
Cash and pooled investments	\$ 740,115	\$ 24,302	\$ 49,161	\$ 813,578	\$ -	\$ 813,578
Cash held in trust	1,547,607	-	-	1,547,607	-	1,547,607
Taxes receivable						
Prior	21,081	153	-	21,234	-	21,234
Due from other governments	23,806	-	-	23,806	-	23,806
Noncurrent assets						
Capital assets						
Depreciable - net	-	-	-	-	19,455	19,455
Total Assets	\$ 2,332,609	\$ 24,455	\$ 49,161	\$ 2,406,225	\$ 19,455	\$ 2,425,680
<u>Liabilities</u>						
Current liabilities						
Accounts payable	\$ 22,232	\$ -	\$ -	\$ 22,232	\$ -	\$ 22,232
Salaries payable	8,823	-	-	8,823	-	8,823
Due to other governments	68,046	14,504	-	82,550	-	82,550
Deferred revenue - unavailable	21,081	153	-	21,234	(21,234)	-
Funds held in trust	1,547,607	-	-	1,547,607	-	1,547,607
Long-term liabilities						
Due in more than one year	-	-	-	-	31,964	31,964
Total Liabilities	\$ 1,667,789	\$ 14,657	\$ -	\$ 1,682,446	\$ 10,730	\$ 1,693,176
<u>Fund Balance/Net Assets</u>						
Fund Balance						
Unreserved, designated for working capital cash flow	\$ 310,000	\$ -	\$ -	\$ 310,000	\$ (310,000)	
Undesignated	354,820	9,798	49,161	413,779	(413,779)	
Total Fund Balance	\$ 664,820	\$ 9,798	\$ 49,161	\$ 723,779	\$ (723,779)	
Total Liabilities and Fund Balance	\$ 2,332,609	\$ 24,455	\$ 49,161	\$ 2,406,225		
Net Assets						
Invested in capital assets					\$ 19,455	\$ 19,455
Unrestricted					713,049	713,049
Total Net Assets					\$ 732,504	\$ 732,504

(Continued)

COON CREEK WATERSHED DISTRICT
ANOKA COUNTY, MINNESOTA

EXHIBIT 1
(Continued)

GOVERNMENTAL FUNDS BALANCE SHEET AND
GOVERNMENTAL ACTIVITIES - STATEMENT OF NET ASSETS
WITH ADJUSTMENTS TO CONVERT MODIFIED TO FULL ACCRUAL
DECEMBER 31, 2008

Reconciliation of the Governmental Fund Balance to Net Assets

Fund Balance - Governmental Funds	\$ 723,779
Total net assets reported for governmental activities are different because:	
Capital assets used in governmental activities are not financial resources and, therefore, are not reported as assets in the funds.	19,455
Long-term liabilities are not due and payable in the current period and, accordingly, are not reported as liabilities in the funds.	(31,964)
Revenues in the statement of activities that do not provide current financial resources are not reported as revenues in the funds.	<u>21,234</u>
Net Assets - Governmental Activities	<u><u>\$ 732,504</u></u>

**COON CREEK WATERSHED DISTRICT
ANOKA COUNTY, MINNESOTA**

EXHIBIT 2

**GOVERNMENTAL FUNDS STATEMENT OF REVENUES, EXPENDITURES, AND CHANGES IN FUND BALANCE
AND GOVERNMENTAL ACTIVITIES - STATEMENT OF ACTIVITIES
WITH ADJUSTMENTS TO CONVERT MODIFIED TO FULL ACCRUAL
FOR THE YEAR ENDED DECEMBER 31, 2008**

	<u>General Fund</u>	<u>Operations and Maintenance</u>	<u>Ditch</u>	<u>Total</u>	<u>Adjustments</u>	<u>Governmental Activities</u>
Revenues						
Taxes	\$ 634,735	\$ -	\$ -	\$ 634,735	\$ 752	\$ 635,487
Licenses and permits	23,176	-	-	23,176	-	23,176
Intergovernmental	50,558	-	-	50,558	-	50,558
Charges for services	12,506	-	-	12,506	-	12,506
Investment income	53,671	-	-	53,671	-	53,671
Miscellaneous	1,195	-	-	1,195	-	1,195
Total Revenues	<u>775,841</u>	<u>-</u>	<u>-</u>	<u>775,841</u>	<u>752</u>	<u>776,593</u>
Expenditures/Expenses						
Current						
Conservation of natural resources	873,753	47,969	992	922,714	6,363	929,077
Depreciation	-	-	-	-	(1,331)	(1,331)
Total Expenditures/Expenses	<u>873,753</u>	<u>47,969</u>	<u>992</u>	<u>922,714</u>	<u>5,032</u>	<u>927,746</u>
Net Change in Fund Balance/ Net Assets	(97,912)	(47,969)	(992)	(146,873)	(4,280)	(151,153)
Fund Balance/Net Assets January 1	<u>762,732</u>	<u>57,767</u>	<u>50,153</u>	<u>870,652</u>	<u>13,005</u>	<u>883,657</u>
December 31	<u>\$ 664,820</u>	<u>\$ 9,798</u>	<u>\$ 49,161</u>	<u>\$ 723,779</u>	<u>\$ 8,725</u>	<u>\$ 732,504</u>

(Continued)

**COON CREEK WATERSHED DISTRICT
ANOKA COUNTY, MINNESOTA**

**EXHIBIT 2
(Continued)**

**GOVERNMENTAL FUNDS STATEMENT OF REVENUES, EXPENDITURES, AND CHANGES IN FUND BALANCE
AND GOVERNMENTAL ACTIVITIES - STATEMENT OF ACTIVITIES
WITH ADJUSTMENTS TO CONVERT MODIFIED TO FULL ACCRUAL
FOR THE YEAR ENDED DECEMBER 31, 2008**

**Reconciliation of the Statement of Governmental Fund Revenues, Expenditures, and
Changes in Fund Balance to the Statement of Activities**

Net Change in Fund Balance \$ (146,873)

Amounts reported for governmental activities are different because:

Governmental funds report capital outlays as expenditures. However, in the statement of activities, the cost of those assets is allocated over their estimated useful lives and reported as depreciation expense.

Expenditures for general capital assets	14,619	
Current year depreciation	<u>(13,288)</u>	1,331

Certain expenses reported in the statement of activities do not require the use of current financial resources and, therefore, are not reported as expenditures in governmental funds.

Change in compensated absences		(6,363)
--------------------------------	--	---------

In the funds, under the modified accrual basis, receivables not available for expenditure are deferred. In the statement of activities, those revenues are recognized when earned. The adjustment to revenue between the fund statements and the statement of activities is the increase (decrease) in tax revenue deferred as unavailable.

Deferred revenue - December 31	\$ 21,234	
Deferred revenue - January 1	<u>(20,482)</u>	<u>752</u>

Change in Net Assets of Governmental Activities **\$ (151,153)**

**COON CREEK WATERSHED DISTRICT
ANOKA COUNTY, MINNESOTA**

**NOTES TO THE FINANCIAL STATEMENTS
AS OF AND FOR THE YEAR ENDED DECEMBER 31, 2008**

1. Summary of Significant Accounting Policies

The Coon Creek Watershed District's financial statements are prepared in accordance with generally accepted accounting principles (GAAP) as of and for the year ended December 31, 2008. The Governmental Accounting Standards Board (GASB) is responsible for establishing GAAP for state and local governments through its pronouncements (statements and interpretations). Governments are also required to follow the pronouncements of the Financial Accounting Standards Board issued through November 30, 1989, (when applicable) that do not conflict with or contradict GASB pronouncements. The more significant accounting policies established in GAAP and used by the District are discussed below.

A. Financial Reporting Entity

The Coon Creek Watershed District was organized in 1959 under the provisions of Minn. Stat. ch. 103D; additional powers and duties are contained in Minn. Stat. chs. 103E and 103B.

The purpose of the District is to provide water management within its geographic boundaries. The watershed is 94 square miles in size and includes those lands within the drainage area, or watershed, of Coon Creek. The Creek's drainage involves portions of the communities of Andover, Blaine, Columbus, Coon Rapids, and Ham Lake. The headwaters of the Creek are in the Carlos Avery Wildlife Management Area in Columbus. The Creek flows 17 miles and enters the Mississippi River downstream from the Coon Rapids Dam in Coon Rapids. In addition to existing water problems, the District recognizes the need to prevent flooding and improve water quality. The District complies with the Metropolitan Water Management Act, the intent of which is to prevent water problems by preserving and using natural retention systems.

The District is governed by a Board of Managers composed of five members appointed by the Anoka County Board of Commissioners for three-year terms.

As required by generally accepted accounting principles, consideration has been given to other organizations that should be included in the District's financial statements for which the nature and significance of their relationship with the District are such that exclusion would cause the District's financial statements to be misleading or incomplete. There are no organizations that should be presented with the District.

**COON CREEK WATERSHED DISTRICT
ANOKA COUNTY, MINNESOTA**

1. Summary of Significant Accounting Policies (Continued)

B. Basic Financial Statements

1. Government-Wide Columns

The financial statements combine fund level financial statements and government-wide financial statements (governmental activities column).

The government-wide financial statement columns (the statement of net assets and the statement of activities) display information about the District. These columns include the financial activities of the overall District government, except for fiduciary activities. Eliminations have been made to minimize the double counting of internal activities.

The governmental activities columns:

- (a) are presented on a consolidated basis; and
- (b) are reported on a full accrual, economic resource basis, which recognizes all long-term assets and receivables as well as long-term debt and obligations. The District's net assets are reported in three parts: (1) invested in capital assets, net of related debt; (2) restricted net assets; and (3) unrestricted net assets. The District first utilizes restricted resources to finance qualifying activities.

2. Governmental Fund Financial Statement Columns

The governmental fund financial statement columns provide information about the District's funds, excluding its fiduciary funds. Separate statements for fiduciary funds are presented. The emphasis of governmental fund financial statements is on major individual governmental funds, with each displayed as separate columns.

The District reports the following major governmental funds:

The General Fund is the District's primary operating fund. It accounts for all financial resources of the general government, except those required to be accounted for in another fund.

**COON CREEK WATERSHED DISTRICT
ANOKA COUNTY, MINNESOTA**

1. Summary of Significant Accounting Policies

B. Basic Financial Statements

2. Governmental Fund Financial Statement Columns (Continued)

The Operations and Maintenance Special Revenue Fund is used to account for maintenance and repair work within the District. The District is authorized by 1991 Minn. Laws ch. 291, art. 4, § 18, to levy not more than \$30,000 annually for these purposes.

The Ditch Special Revenue Fund is used to account for maintenance activities, together with related funding, for ditches within the District.

3. Fiduciary Funds

The District also reports the following fund type:

The Agency Fund is custodial in nature and does not present results of operations or have a measurement focus. This fund accounts for assets that the District holds for others in an agent capacity. This fund was eliminated in 2008.

C. Measurement Focus and Basis of Accounting

The governmental activities columns are reported using the economic resources measurement focus and the accrual basis of accounting. Revenues are recorded when earned, and expenses are recorded when a liability is incurred, regardless of the timing of related cash flows. Property taxes are recognized as revenues in the year for which they are levied. Grants and similar items are recognized as revenue as soon as all eligibility requirements imposed by the provider have been met.

Governmental fund columns are reported using the current financial resources measurement focus and the modified accrual basis of accounting. Revenues are recognized as soon as they are both measurable and available. The District considers all revenues as available if collected within 60 days after the end of the current period. Property and other taxes, licenses, and interest are all considered susceptible to accrual. Expenditures are recorded when the related fund liability is incurred, except for principal and interest on long-term debt, compensated absences, and claims and

**COON CREEK WATERSHED DISTRICT
ANOKA COUNTY, MINNESOTA**

1. Summary of Significant Accounting Policies

C. Measurement Focus and Basis of Accounting (Continued)

judgments, which are recognized as expenditures to the extent that they have matured. Proceeds of long-term debt and acquisitions under capital leases are reported as other financing sources.

When both restricted and unrestricted resources are available for use, it is the District's policy to use restricted resources first and then unrestricted resources as needed.

D. Assets, Liabilities, and Net Assets or Equity

1. Deposits and Investments

The cash balances of substantially all funds are pooled and invested by the District through Anoka County for the purpose of increasing earnings through investment activities. Pooled investments are reported at their fair value at December 31, 2008, based on market prices. Because of the relatively small balances of the other funds, all investment earnings are credited to the General Fund. Pooled investment earnings for 2008 were \$53,671.

Through Anoka County, Coon Creek Watershed District invests in an external investment pool, the Minnesota Association of Governments Investing for Counties (MAGIC) Fund, which is created under a joint powers agreement pursuant to Minn. Stat. § 471.59. The MAGIC Fund is not registered with the Securities and Exchange Commission (SEC), but does operate in a manner consistent with Rule 2a-7 prescribed by the SEC pursuant to the Investment Company Act of 1940 (17 C.F.R. § 270.2a-7). Therefore, the fair value of the District's position in the pool is the same as the value of the pool shares.

2. Property Taxes and Special Assessments

An ad valorem property tax may be levied against all properties in the District with levy limits prescribed by state statute. Property tax levies must be approved by the District Board and certified to the Anoka County Auditor in October of each year for collection in the following year. Taxes are payable to the County in two installments by May 15 and October 15.

**COON CREEK WATERSHED DISTRICT
ANOKA COUNTY, MINNESOTA**

1. Summary of Significant Accounting Policies

D. Assets, Liabilities, and Net Assets or Equity

2. Property Taxes and Special Assessments (Continued)

Special assessment levies may be approved by the District Board for maintenance and construction purposes in accordance with state statutes. These assessments are charged against those properties benefiting from the maintenance and construction. Special assessments must be certified to the County Auditor in a manner similar to property taxes.

Property taxes and special assessments receivable consist of amounts certified to Anoka County but not yet collected. Special assessments receivable are recorded when the full levy amount is submitted to the County, though actual assessment against property owners may occur over several years.

3. Capital Assets

Capital assets, which include property, plant, equipment, and infrastructure assets (for example, roads, bridges, and similar items), are reported in the governmental activities column in the government-wide financial statements. Capital assets are defined by the District as assets with an initial, individual cost of \$1,000 or more and an estimated useful life in excess of three years. Such assets are recorded at historical cost or estimated historical cost if purchased or constructed. Donated capital assets are recorded at estimated fair market value at the date of donation.

The costs of normal maintenance and repairs that do not add to the value of the asset or materially extend assets' lives are not capitalized. Major outlays for capital assets and improvements are capitalized as projects are constructed.

Property, plant, and equipment of the District are depreciated using the straight-line method over the estimated useful lives ranging from 3 to 20 years.

4. Flexible Time Off, Extended Medical Benefits, and Personal Conversion Accounts

The District's employees' vacation and sick time was converted to flexible time off (FTO), extended medical benefits (EMB), and personal conversion account (PCA) hours as part of the October 2001 implementation of the Anoka County Preferred Benefit Plan, which the Coon Creek Watershed District elected to follow.

**COON CREEK WATERSHED DISTRICT
ANOKA COUNTY, MINNESOTA**

1. Summary of Significant Accounting Policies

D. Assets, Liabilities, and Net Assets or Equity

4. Flexible Time Off, Extended Medical Benefits, and Personal Conversion Accounts
(Continued)

Vacation hours were converted to FTO hours and are vested. The amount of FTO hours a full-time employee earns ranges from 24 to 33 days per year depending on years of service performed. Part-time employees are prorated based on their scheduled hours and years of service.

The unvested sick leave hours were converted to EMB hours. These hours are not vested and are valued at \$40,084 at December 31, 2008. EMB hours are available for use in times of illness after using 40 FTO or leave without pay hours. Full-time employees accrue eight days of EMB per year, and part-time employees receive a prorated amount based on their schedule.

5. Deferred Revenue

All District funds and the governmental activities defer revenue for resources that have been received, but not yet earned. Governmental funds also report deferred revenue in connection with receivables for revenues not considered to be available to liquidate liabilities of the current period.

6. Fund Equity

In the fund financial statements, designations of fund balance represent tentative management plans subject to change.

7. Use of Estimates

The preparation of financial statements in conformity with accounting principles generally accepted in the United States of America requires management to make estimates and assumptions that affect the reported amounts of assets and liabilities and disclosure of contingent assets and liabilities at the date of the financial statements and the reported amounts of revenues and expenses during the reporting period. Actual results could differ from those estimates.

**COON CREEK WATERSHED DISTRICT
ANOKA COUNTY, MINNESOTA**

2. Stewardship, Compliance, and Accountability

A. Budgetary Information

The District's Board of Managers adopts estimated revenue and expenditure budgets for the General Fund and the Operations and Maintenance and Ditch Special Revenue Funds.

The budgets may be amended or modified at any time by the Board. Comparisons of estimated revenues and expenditures to actual are presented as required supplementary information for the General Fund and budgeted special revenue funds. Budgets for the General Fund and special revenue funds are adopted on a basis consistent with generally accepted accounting principles.

B. Excess of Expenditures Over Budget

The Ditch Special Revenue Fund's expenditures were in excess of budget for the year ended December 31, 2008. Comparisons of budget to actual results can be found in Schedules 1, and 2.

3. Detailed Notes on All Funds

A. Assets

1. Deposits and Investments

Reconciliation of the District's total cash and investments to the basic financial statements follows:

Statement of Net Assets	
Governmental Activities	
Cash and pooled investments	\$ 813,578
Cash held in trust	<u>1,547,607</u>
Total Cash and Investments	<u><u>\$ 2,361,185</u></u>

**COON CREEK WATERSHED DISTRICT
ANOKA COUNTY, MINNESOTA**

3. Detailed Notes on All Funds

A. Assets

1. Deposits and Investments (Continued)

a. Deposits

Cash transactions are administered by Anoka County who is, according to Minn. Stat. §§ 118A.02 and 118A.04, authorized to designate depositories for public funds and to invest in certificates of deposit. Minn. Stat. § 118A.03 requires that all District deposits be protected by insurance, surety bond, or collateral. The market value of collateral pledged shall be at least ten percent more than the amount on deposit at the close of the financial institution's banking day, not covered by insurance or bonds.

Authorized collateral includes treasury bills, notes and bonds; issues of U.S. government agencies; general obligations rated "A" or better, revenue obligations rated "AA" or better; irrevocable standby letters of credit issued by the Federal Home Loan Bank; and certificates of deposit. Minnesota statutes require that securities pledged as collateral be held in safekeeping in a restricted account at the Federal Reserve Bank or in an account at a trust department of a commercial bank or other financial institution that is not owned or controlled by the financial institution furnishing the collateral.

Custodial Credit Risk

Custodial credit risk is the risk that in the event of a financial institution failure, the District's deposits may not be returned to it. The District does not have a deposit policy for custodial credit risk. As of December 31, 2008, the District had no deposits.

**COON CREEK WATERSHED DISTRICT
ANOKA COUNTY, MINNESOTA**

3. Detailed Notes on All Funds

A. Assets

1. Deposits and Investments (Continued)

b. Investments

Minn. Stat. §§ 118A.04 and 118A.05 generally authorize the following types of investments as available to the District:

- (1) securities which are direct obligations or are guaranteed or insured issues of the United States, its agencies, its instrumentalities, or organizations created by an act of Congress, except mortgage-backed securities defined as “high risk” by Minn. Stat. § 118A.04, subd. 6;
- (2) mutual funds through shares of registered investment companies provided the mutual fund receives certain ratings depending on its investments;
- (3) general obligations of the State of Minnesota and its municipalities, and in certain state agency and local obligations of Minnesota and other states provided such obligations have certain specified bond ratings by a national bond rating service;
- (4) bankers’ acceptances of United States banks;
- (5) commercial paper issued by United States corporations or their Canadian subsidiaries that is rated in the highest quality category by two nationally recognized rating agencies and matures in 270 days or less; and
- (6) with certain restrictions, in repurchase agreements, securities lending agreements, joint powers investment trusts, and guaranteed investment contracts.

**COON CREEK WATERSHED DISTRICT
ANOKA COUNTY, MINNESOTA**

3. Detailed Notes on All Funds

A. Assets

1. Deposits and Investments

b. Investments (Continued)

The District does not have additional policies for the investment risks, described below, beyond complying with the requirements of Minnesota statutes.

Custodial Credit Risk

The custodial credit risk for investments is the risk that, in the event of the failure of the counterparty to a transaction, a government will not be able to recover the value of investment or collateral securities that are in the possession of an outside party. At December 31, 2008, none of the District's investments were subject to custodial credit risk.

Concentration of Credit Risk

The concentration of credit risk is the risk of loss that may be caused by the District's investment in a single issuer. At December 31, 2008, the District held \$2,361,185 in a pooled investment fund (MAGIC Fund).

Interest Rate Risk

Interest rate risk is the risk that changes in the market interest rates will adversely affect the fair value of an investment. At December 31, 2008, none of the District's investments were subject to interest rate risk.

Credit Risk

Generally, credit risk is the risk that an issuer of an investment will not fulfill its obligation to the holder of the investment. This is measured by the assignment of a rating by a nationally recognized statistical rating organization. At December 31, 2008, none of the District's investments were subject to credit risk.

**COON CREEK WATERSHED DISTRICT
ANOKA COUNTY, MINNESOTA**

3. Detailed Notes on All Funds

A. Assets (Continued)

2. Receivables

The District has no receivables scheduled to be collected beyond one year, except for delinquent taxes receivable.

3. Capital Assets

Capital asset activity for the year ended December 31, 2008, was as follows:

	Balance	Increase	Decreases	Balance
Capital assets depreciated				
Machinery and equipment	\$ 49,639	\$ 14,619	\$ -	\$ 64,258
Less: accumulated depreciation for				
Machinery and equipment	31,515	13,288	-	44,803
Total Capital Assets Depreciated, Net	\$ 18,124	\$ 1,331	\$ -	\$ 19,455

Depreciation expense of \$13,288 was charged to the District's conservation of natural resources function.

B. Liabilities

1. Payables

Payables at December 31, 2008, were as follows:

	Governmental Activities
Accounts	\$ 22,232
Salaries	8,823
Due to other governments	82,550
Total Payables	\$ 113,605

**COON CREEK WATERSHED DISTRICT
ANOKA COUNTY, MINNESOTA**

3. Detailed Notes on All Funds

B. Liabilities (Continued)

2. Deferred Revenue

Deferred revenue consists of taxes receivable that are not collected soon enough after year-end to pay liabilities of the current period. Deferred revenue at December 31, 2008, is summarized below by fund:

	<u>Taxes</u>
Governmental Funds	
General	\$ 21,081
Operations and Special Revenue	<u>153</u>
Total	<u><u>\$ 21,234</u></u>

3. Long-Term Debt - Compensated Absences

District employees are granted flexible time off (FTO) in varying amounts depending on length of service. All employees accumulate extended medical benefits. Unused, accumulated FTO is paid to employees upon termination. The amount payable at December 31, 2008, is \$31,964, which is an increase of \$6,363 from the payable of \$25,601 at December 31, 2007.

4. Funds Held in Trust

Funds held in trust at December 31, 2008, consist of the following:

Developer deposits	<u><u>\$ 1,547,607</u></u>
--------------------	----------------------------

5. Operating Leases

The District entered into an operating lease for office space beginning June 1, 2000, and terminating on May 31, 2005. The operating lease was subsequently extended until May 31, 2010. The District made lease payments totaling \$17,754 on this lease for the year ended December 31, 2008.

**COON CREEK WATERSHED DISTRICT
ANOKA COUNTY, MINNESOTA**

3. Detailed Notes on All Funds

B. Liabilities

5. Operating Leases (Continued)

The District entered into an operating lease for a copier beginning December 3, 2007, and terminating on December 3, 2012. The District made lease payments totaling \$2,708 on this lease for the year ended December 31, 2008.

Future minimum lease payments under the operating leases consist of the following at December 31, 2008:

<u>Fiscal Year</u>	<u>Space</u>	<u>Copier</u>	<u>Total</u>
2009	\$ 17,754	\$ 2,620	\$ 20,374
2010	7,398	2,620	10,018
2011	-	2,620	2,620
2012	-	2,402	2,402
Total	<u>\$ 25,152</u>	<u>\$ 10,262</u>	<u>\$ 35,414</u>

4. Pension Plans

A. Plan Description

All full-time and certain part-time employees of the Coon Creek Watershed District are covered by defined benefit pension plans administered by the Public Employees Retirement Association of Minnesota (PERA). PERA administers the Public Employees Retirement Fund, which is a cost-sharing, multiple-employer retirement plan. The plan is established and administered in accordance with Minn. Stat. chs. 353 and 356.

Public Employees Retirement Fund members belong to either the Coordinated Plan or the Basic Plan. Coordinated Plan members are covered by Social Security, and Basic Plan members are not. All new members must participate in the Coordinated Plan.

**COON CREEK WATERSHED DISTRICT
ANOKA COUNTY, MINNESOTA**

4. Pension Plans

A. Plan Description (Continued)

PERA provides retirement benefits as well as disability benefits to members and benefits to survivors upon death of eligible members. Benefits are established by state statute and vest after three years of credited service. The defined retirement benefits are based on a member's highest average salary for any five successive years of allowable service, age, and years of credit at termination of service.

Two methods are used to compute benefits for Coordinated and Basic Plan members. The retiring member receives the higher of a step-rate benefit accrual formula (Method 1) or a level accrual formula (Method 2). Under Method 1, the annuity accrual rate for a Basic Plan member is 2.2 percent of average salary for each of the first ten years of service and 2.7 percent for each year thereafter. For a Coordinated Plan member, the annuity accrual rate is 1.2 percent of average salary for each of the first ten years and 1.7 percent for each successive year. Using Method 2, the annuity accrual rate is 2.7 percent of average salary for Basic Plan members and 1.7 percent for Coordinated Plan members for each year of service.

For Public Employees Retirement Fund members whose annuity is calculated using Method 1, a full annuity is available when age plus years of service equal 90. Normal retirement age is 65 for members hired prior to July 1, 1989, and is the age for unreduced social security benefits capped at age 66 for Coordinated members hired on or after July 1, 1989. A reduced retirement annuity is also available to eligible members seeking early retirement.

The benefit provisions stated in the previous paragraphs of this section are current provisions and apply to active plan participants. Vested, terminated employees who are entitled to benefits but are not yet receiving them are bound by the provisions in effect at the time they last terminated public service.

PERA issues a publicly available financial report that includes financial statements and required supplementary information for the Public Employees Retirement Fund. That report may be obtained on the internet at www.mnpera.org; by writing to PERA at 60 Empire Drive, Suite 200, Saint Paul, Minnesota 55103-2088; or by calling 651-296-7460 or 1-800-652-9026.

**COON CREEK WATERSHED DISTRICT
ANOKA COUNTY, MINNESOTA**

4. Pension Plans (Continued)

B. Funding Policy

Pension benefits are funded from member and employer contributions and income from the investment of fund assets. Minn. Stat. ch. 353 sets the rates for employer and employee contributions. The Coon Creek Watershed District makes annual contributions to the pension plans equal to the amount required by state statutes. Public Employees Retirement Fund Basic Plan members and Coordinated Plan members were required to contribute 9.10 and 6.00 percent, respectively, of their annual covered salary in 2008. Contribution rates in the Coordinated Plan remained the same in 2009 at 6.00 percent.

The Coon Creek Watershed District is required to contribute the following percentages of annual covered payroll in 2008 and 2009:

	2008	2009
Public Employees Retirement Fund		
Basic Plan members	11.78%	11.78%
Coordinated Plan members	6.50	6.75

The District's contributions for the years ending December 31, 2008, 2007, and 2006, for the Public Employees Retirement Fund were:

	2008	2007	2006
\$	15,341	\$ 14,093	\$ 11,807

These contribution amounts are equal to the contractually required contributions for each year as set by state statute.

5. Risk Management

The District is exposed to various risks of loss related to torts; theft of, damage to, or destruction of assets; errors or omissions; injuries to employees; and natural disasters. The District is self-insured, in part, for losses related to destruction of assets. The District carries commercial insurance for all other forms of risk. There were no significant reductions for the year ended December 31, 2008, in insurance coverage for any major category of risk. Settled claims resulting from these risks have not exceeded commercial insurance coverage during the past three years.

**COON CREEK WATERSHED DISTRICT
ANOKA, MINNESOTA**

This page left blank intentionally.

REQUIRED SUPPLEMENTARY INFORMATION

**COON CREEK WATERSHED DISTRICT
ANOKA, MINNESOTA**

This page left blank intentionally.

**COON CREEK WATERSHED DISTRICT
ANOKA COUNTY, MINNESOTA**

Schedule 1

**BUDGETARY COMPARISON SCHEDULE
GENERAL FUND
FOR THE YEAR ENDED DECEMBER 31, 2008**

	<u>Budgeted Amounts</u>		<u>Actual Amounts</u>	<u>Variance with Final Budget</u>
	<u>Original</u>	<u>Final</u>		
Revenues				
Taxes	\$ 636,204	\$ 636,204	\$ 634,735	\$ (1,469)
Licenses and permits	1,545	1,545	23,176	21,631
Intergovernmental	39,883	39,883	50,558	10,675
Charges for services	34,330	34,330	12,506	(21,824)
Investment income	10,000	10,000	53,671	43,671
Miscellaneous	-	-	1,195	1,195
Total Revenues	<u>\$ 721,962</u>	<u>\$ 721,962</u>	<u>\$ 775,841</u>	<u>\$ 53,879</u>
Expenditures				
Current				
Conservation of natural resources				
Personal services	\$ 402,565	\$ 402,565	\$ 314,371	\$ 88,194
Contractual services	164,279	164,279	204,132	(39,853)
Other services and charges	327,700	327,700	342,496	(14,796)
Capital outlay	21,630	21,630	12,754	8,876
Total Expenditures	<u>\$ 916,174</u>	<u>\$ 916,174</u>	<u>\$ 873,753</u>	<u>\$ 42,421</u>
Net Change in Fund Balance	<u>\$ (194,212)</u>	<u>\$ (194,212)</u>	<u>\$ (97,912)</u>	<u>\$ 96,300</u>
Fund Balance - January 1	<u>762,732</u>	<u>762,732</u>	<u>762,732</u>	<u>-</u>
Fund Balance - December 31	<u><u>\$ 568,520</u></u>	<u><u>\$ 568,520</u></u>	<u><u>\$ 664,820</u></u>	<u><u>\$ 96,300</u></u>

**COON CREEK WATERSHED DISTRICT
ANOKA COUNTY, MINNESOTA**

Schedule 2

**BUDGETARY COMPARISON SCHEDULE
OPERATIONS AND MAINTENANCE SPECIAL REVENUE FUND
FOR THE YEAR ENDED DECEMBER 31, 2008**

	<u>Budgeted Amounts</u>		<u>Actual Amounts</u>	<u>Variance with Final Budget</u>
	<u>Original</u>	<u>Final</u>		
Revenues				
Taxes	\$ -	\$ -	\$ -	\$ -
Expenditures				
Current				
Conservation of natural resources				
Other services and charges	<u>50,000</u>	<u>50,000</u>	<u>47,969</u>	<u>2,031</u>
Net Change in Fund Balance	\$ (50,000)	\$ (50,000)	\$ (47,969)	\$ 2,031
Fund Balance - January 1	<u>57,767</u>	<u>57,767</u>	<u>57,767</u>	<u>-</u>
Fund Balance - December 31	<u><u>\$ 7,767</u></u>	<u><u>\$ 7,767</u></u>	<u><u>\$ 9,798</u></u>	<u><u>\$ 2,031</u></u>

**COON CREEK WATERSHED DISTRICT
ANOKA COUNTY, MINNESOTA**

Schedule 3

**BUDGETARY COMPARISON SCHEDULE
DITCH SPECIAL REVENUE FUND
FOR THE YEAR ENDED DECEMBER 31, 2008**

	<u>Budgeted Amounts</u>		<u>Actual Amounts</u>	<u>Variance with Final Budget</u>
	<u>Original</u>	<u>Final</u>		
Revenues				
Special assessments	\$ -	\$ -	\$ -	\$ -
Expenditures				
Current				
Conservation of natural resources				
Other services and charges	-	-	992	(992)
Net Change in Fund Balance	\$ -	\$ -	\$ (992)	\$ (992)
Fund Balance - January 1	<u>50,153</u>	<u>50,153</u>	<u>50,153</u>	<u>-</u>
Fund Balance - December 31	<u><u>\$ 50,153</u></u>	<u><u>\$ 50,153</u></u>	<u><u>\$ 49,161</u></u>	<u><u>\$ (992)</u></u>

**COON CREEK WATERSHED DISTRICT
ANOKA, MINNESOTA**

This page left blank intentionally.

**COON CREEK WATERSHED DISTRICT
ANOKA COUNTY, MINNESOTA**

**NOTES TO THE REQUIRED SUPPLEMENTARY INFORMATION
FOR THE YEAR ENDED DECEMBER 31, 2008**

1. Budgetary Information

Annual budgets are adopted on a basis consistent with generally accepted accounting principles for all governmental funds. All annual appropriations lapse at fiscal year-end unless specifically carried over to the next budget year by Board action.

On or before mid-June of each year, the District Manager prepares a draft budget for the upcoming fiscal year. Before August 31, the proposed budget is presented to the District Board for review. The Board holds public hearings, and a final budget must be prepared and adopted no later than September 30.

The appropriated budget is prepared by fund and function. The legal level of budgetary control (the level at which expenditures may not legally exceed appropriations) is the function level.

Encumbrance accounting is employed in governmental funds. Encumbrances (such as purchase orders or contracts) outstanding at year-end are reported as reservations of fund balances and do not constitute expenditures or liabilities because the commitments will be reapportioned and honored during the subsequent year.

2. Excess of Expenditures Over Appropriations

The Ditch Fund's expenditures were \$992 in excess of budget for the year ended December 31, 2008.

**COON CREEK WATERSHED DISTRICT
ANOKA, MINNESOTA**

This page left blank intentionally.

OTHER SUPPLEMENTARY INFORMATION

**COON CREEK WATERSHED DISTRICT
ANOKA, MINNESOTA**

This page left blank intentionally.

**COON CREEK WATERSHED DISTRICT
ANOKA COUNTY, MINNESOTA**

AGENCY FUND

Crooked Lake Agency Fund - This fund is used to account for funds received and disbursed on behalf of the Crooked Lake Association. The fund was eliminated in 2008 when the Crooked Lake Area Association became a 501(c)3 organization and assumed responsibility for the management of the fund.

**COON CREEK WATERSHED DISTRICT
ANOKA, MINNESOTA**

This page left blank intentionally.

**COON CREEK WATERSHED DISTRICT
ANOKA COUNTY, MINNESOTA**

Statement 1

**STATEMENT OF CHANGES IN ASSETS AND LIABILITIES
CROOKED LAKE AGENCY FUND
FOR THE YEAR ENDED DECEMBER 31, 2008**

	Balance January 1	Additions	Deductions	Balance December 31
<u>Assets</u>				
Cash and pooled investments	\$ 7,703	\$ -	\$ 7,703	\$ -
<u>Liabilities</u>				
Accounts payable	\$ 7,703	\$ -	\$ 7,703	\$ -

**COON CREEK WATERSHED DISTRICT
ANOKA, MINNESOTA**

This page left blank intentionally.