

Who to Contact

If you have questions or see a potential violation, Call your city, public works department, the Coon Creek Watershed District, or the state Duty Officer.

See paint or other potentially hazardous material flowing into a street storm drain, pond, ditch, lake or creek? If it is an immediate threat, Call 911! The fire department handles emergency responses for contamination and spills.

Environmental Emergencies (24 hrs) call the MPCA at 1-800-422-0798 or 651-649-5451

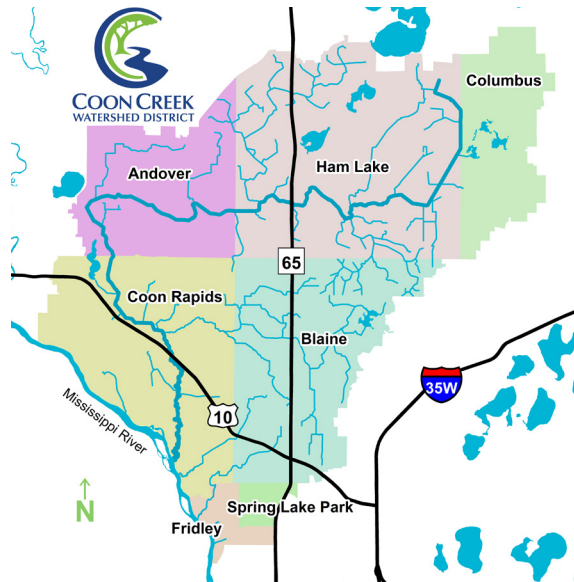
Give your name, address, date & time of the incident, your callback number, & if the local fire/police/sheriff have been notified



Illegal Dumping



What to Know



Our Office

13632 Van Buren St NE
Ham Lake, MN 55304

763.755.0975 | www.cooncreekwd.org |   



The Problem

Rain or snowmelt runoff from roads, parking lots, driveways, sidewalks, & other impervious or compacted surfaces carries pollutants from those surfaces: fertilizer, trash, pet poo, spilled paint, dirt, sand, winter salt residue. This is stormwater pollution.

Violations

Most cities have ordinances against dumping that pollutes water. There are state and federal laws against dumping directly into storm sewer systems like a stormdrain, ditch or stormwater pond.

The Coon Creek Watershed District (CCWD) also has standards to meet for our National Pollutant Discharge Elimination System permit. Therefore, the CCWD has the legal authority to prohibit dumping in or along creeks, ditches, or wetlands. This includes the dumping of grass clippings or leaves which are sources of phosphorous pollution.

If violations are found, the City or CCWD will inform nearby households or the violator, if known. The proper remedy will be required to protect the integrity of the site. For those who don't comply, a Cease and Desist Order can be issued and materials cleaned up at the violator's expense.

Dumping into storm drains, streets, wetlands is called Illicit Discharge.

Common examples:

- Motor oil, gas, grease
- Pesticides, herbicides
- Paint, stain
- Grass clippings, leaves
- Sand
- Winter salt/de-icers
- Fertilizer

What To Do

Paint, motor oil, pesticide, herbicides:

Take to the Anoka County Household Hazardous Waste (HHW) Center in Blaine: 763.324.3400.

Leaves or grass clippings: Mulch them as you mow; compost properly at your home or bag them and take them to a County Compost Site for little or no charge, or hire your garbage hauler to take them:

Bunker Hills: 763.767.7964

Rice Creek: 651.429.3723

Hot tub or pool water: Stop chlorination for at least 3 days then drain onto lawn instead of wetlands, ditches, creeks, or into the street. Irrigation & sump pump discharges should also be directed onto lawn.

What We Do

PREVENT

flooding & pollution



PROTECT

people & property



PARTNER

to ensure water quality



PROMOTE

stewardship

