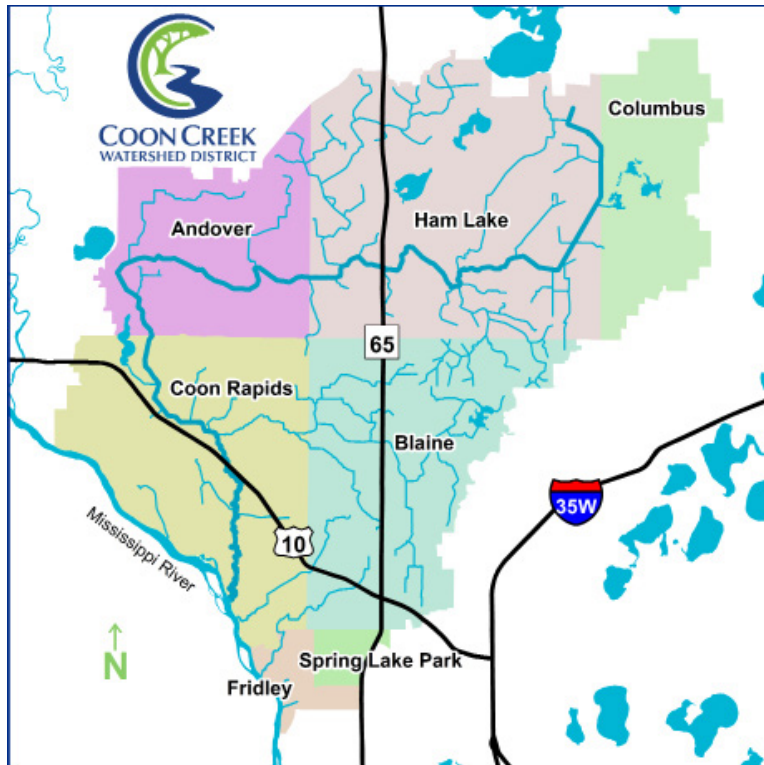


## OUR MISSION

Managing groundwater and surface water drainage systems to prevent property damage, maintain hydrologic balance, and protect water quality for the safety and enjoyment of citizens, and the preservation and enhancement of wildlife habitat.

**BOARD MEETINGS:** Our Board regularly meets twice monthly on 2nd & 4th Mondays at 5:30pm at our office in Ham Lake. Board meetings are always open to the public.

13632 Van Buren St NE, Ham Lake, MN 55304



763.755.0975 | [www.cooncreekwd.org](http://www.cooncreekwd.org) |  



# Introduction



**MANAGING WATER RESOURCES**  
*For Today and Tomorrow*





## What is a Watershed District?

A Watershed District is a special purpose unit of local government that manages water resources within a certain watershed. It is governed by a Board of Managers who are appointed by County Commissioners.

A watershed is all the land that drains to a common waterbody like a lake, creek, or river. The Coon Creek watershed drains to the Mississippi River.

## Where does Coon Creek Watershed District serve?

The Coon Creek Watershed District serves 107 square miles within central Anoka County that includes the 92 square mile drainage of Coon Creek plus 15 square miles that drain directly to the Mississippi River.

Portions of Andover, Blaine, Columbus, Fridley, Ham Lake and Spring Lake Park, plus all of Coon Rapids are within the Coon Creek Watershed District.

## What do we do?

### Reduce costs and keep the public safe by:

- Preventing flooding & water pollution by managing drainage systems
- Protecting property through stormwater & wetland permitting
- Partnering for long-term water quality protection
- Promoting stewardship of our water resources

## TIMELINE

- 1883** **Chapter 106** allowed County Commissioners to authorize the construction of ditches or water courses within the county including the draining of "shallow, grassy, meandered lakes under four feet in depth."
- 1897** **Chapter 257** created a State Drainage Commission to "have care, custody, control and supervision of all drainage ditches in the state." It also provided the first statutory definitions of public and private waters. This law and its powers were expanded until 1917.
- 1955** Watershed District Act authorized watershed districts to take over drainage systems within their boundaries and also evaluate the environmental and natural resource consequences of proposed projects on their drainage systems.
- 1959** Coon Creek Watershed District (CCWD) established by citizen petition to the MN Water Resources Board with the primary responsibility of maintenance and repair of the public drainage system.
- 1982** Metropolitan Water Management Act required the CCWD to protect, preserve, and use natural surface and groundwater systems, to identify and plan for means to effectively protect and improve surface and groundwater quality, and to protect and enhance fish and wildlife habitat and water recreational facilities.
- 1991** MN Wetland Conservation Act (WCA) required a permitting program to achieve a no-net-loss of wetlands.
- 2003** CCWD designated a Municipal Separate Storm Sewer System (MS4) and has to satisfy requirements of the MS4 general permit.
- 2012** CCWD took on jurisdiction of 15 square miles of former Six Cities Watershed Management Organization as requested by the State of MN and cities of Blaine, Coon Rapids, Fridley and Spring Lake Park.

### PREVENT

flooding and pollution



### PROTECT

property and wetlands



### PARTNER

to ensure water quality



### PROMOTE

stewardship

