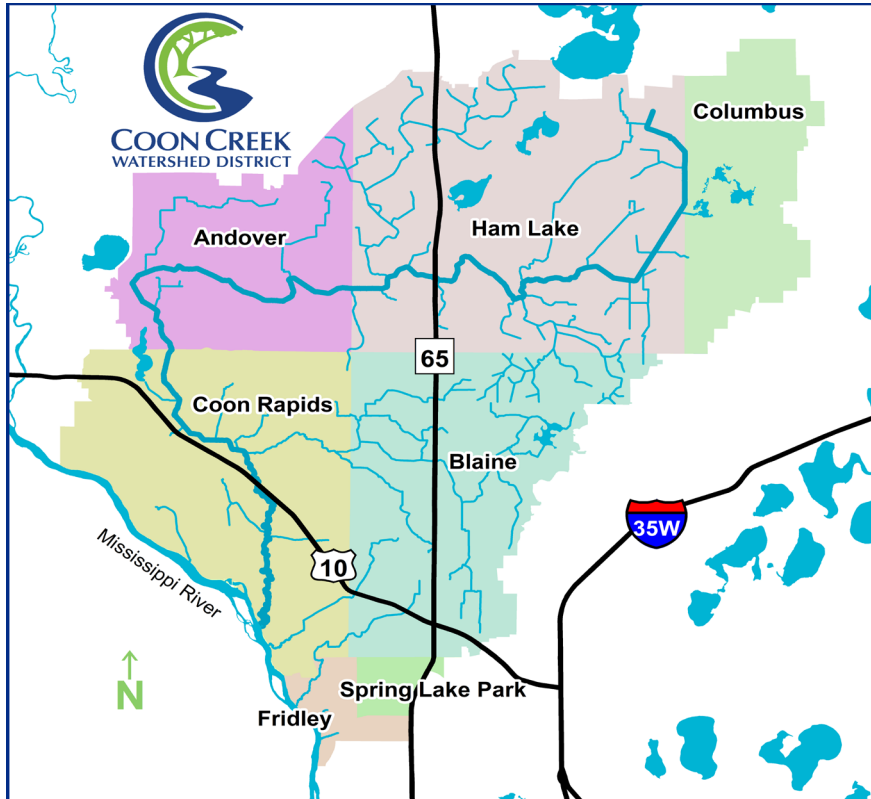


Who We Are

Our Mission: to manage groundwater and surface water drainage systems to prevent property damage, maintain hydrologic balance, and protect water quality for the safety and enjoyment of citizens, and the preservation and enhancement of wildlife habitat.



BOARD MEETINGS: Our Board regularly meets twice monthly on 2nd & 4th Mondays at 5:30pm at our office in Ham Lake. Board meetings are always open to the public.



13632 Van Buren St NE
Ham Lake, MN 55304

763.755.0975 | www.cooncreekwd.org |  

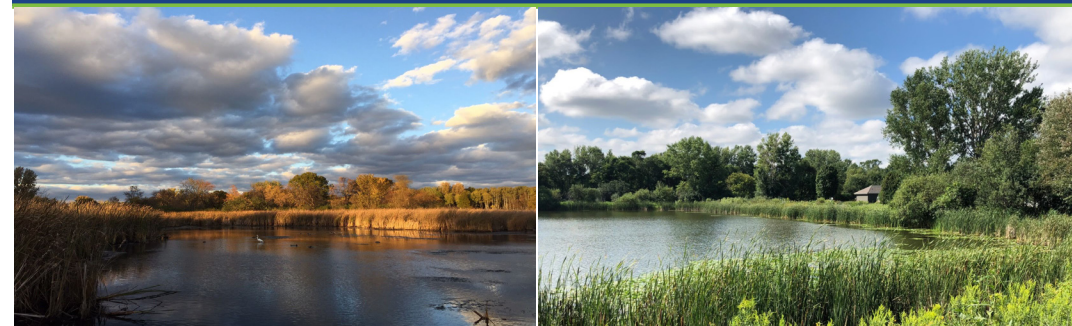


COON CREEK WATERSHED DISTRICT

Ponds



Different Kinds, Different Roles



Ponds

Ponds come in many shapes, sizes, and functions. We have 3 main types of ponds: stormwater ponds, wildlife ponds, and wetlands.

1. **Stormwater ponds** are constructed bodies of water that have been engineered to do specific things: capture pollutants, prevent flooding, or both. Many stormwater ponds also provide habitat for wildlife and are viewed as an aesthetic feature. Stormwater ponds are part of a larger system to drain away stormwater, the rain and snow running off of roads or parking lots. They need periodic maintenance.

2. **Wildlife ponds** are constructed or natural bodies of water with the main purpose of providing habitat to wildlife like geese or ducks and can also be an aesthetic feature.

3. **Wetlands** are natural features on the land, not constructed ones. Wetlands can have open water just part of the year. Wetlands are protected by Minnesota state law and are not to be altered without a permit so as to ensure their function(s) on the landscape.

Many ponds in residential areas are stormwater ponds built during development. Sometimes, stormwater ponds are retrofitted later, after development, in areas where polluted stormwater runoff drains to directly to ditches, streams, rivers or lakes.

The Problem

Stormwater, rain or snowmelt from roads, parking lots, driveways, sidewalks, and other impervious or compacted surfaces, also carries pollutants from those surfaces: fertilizer, trash, pet poo, spilled paint, dirt, sand or winter salt residue.



A Solution: Stormwater ponds

Stormwater ponds are bodies of water that have been engineered to capture stormwater pollutants or prevent flooding. Many stormwater ponds do both. These "storm ponds" are usually part of a larger system to drain away stormwater to prevent flooding. These ponds can hold back flood waters to allow for slower drainage. This holding time allows pollutant particles to sink to the bottom of the pond leaving cleaner water above. This cleaner water then drains away slowly.

Stormwater ponds reduce costs and keep the public safe by:

- Protecting property from flooding
- Providing long-term water quality
- Using low maintenance, natural processes to prevent water pollution

What We Do

PREVENT
flooding & pollution



PROTECT
people & property



PARTNER
to ensure water quality



PROMOTE
stewardship

