

# Pleasure Creek



**Excerpted from  
Pleasure Creek Inspection Report**

**Coon Creek Watershed District  
June 1, 2012**

## Table of Contents

Background .....	1
General Description.....	1
Inspection Methods .....	2
Results .....	2
Some Concerns .....	10

## Tables

Table 1: Pleasure Creek Maintenance Needs.....	3
Table 2: Pleasure Creek Concerns.....	3

## Figures

Figure 1: Pleasure Creek watershed.....	1
Figure 2: Pleasure Creek channel condition.....	2
Figure 3: Pleasure Creek maintenance needs.....	3
Figure 4: Pleasure Creek priority repair sites.....	4
Figure 5: Pleasure Creek channel vegetation descriptions.....	5
Figure 6: Pleasure Creek side slope vegetation descriptions.....	6
Figure 7: Pleasure Creek substrate descriptions.....	7
Figure 8: Pleasure Creek channel descriptions.....	8

# Executive Summary

## Background

The Coon Creek Watershed District (CCWD) annually inspects 20% of the public ditch system as noted in our 10-year Comprehensive Plan. Pleasure Creek was inspected in May 2012. This summary highlights inspection findings.

## General Description

Pleasure Creek is a natural stream located in Coon Rapids and Blaine, Minnesota.

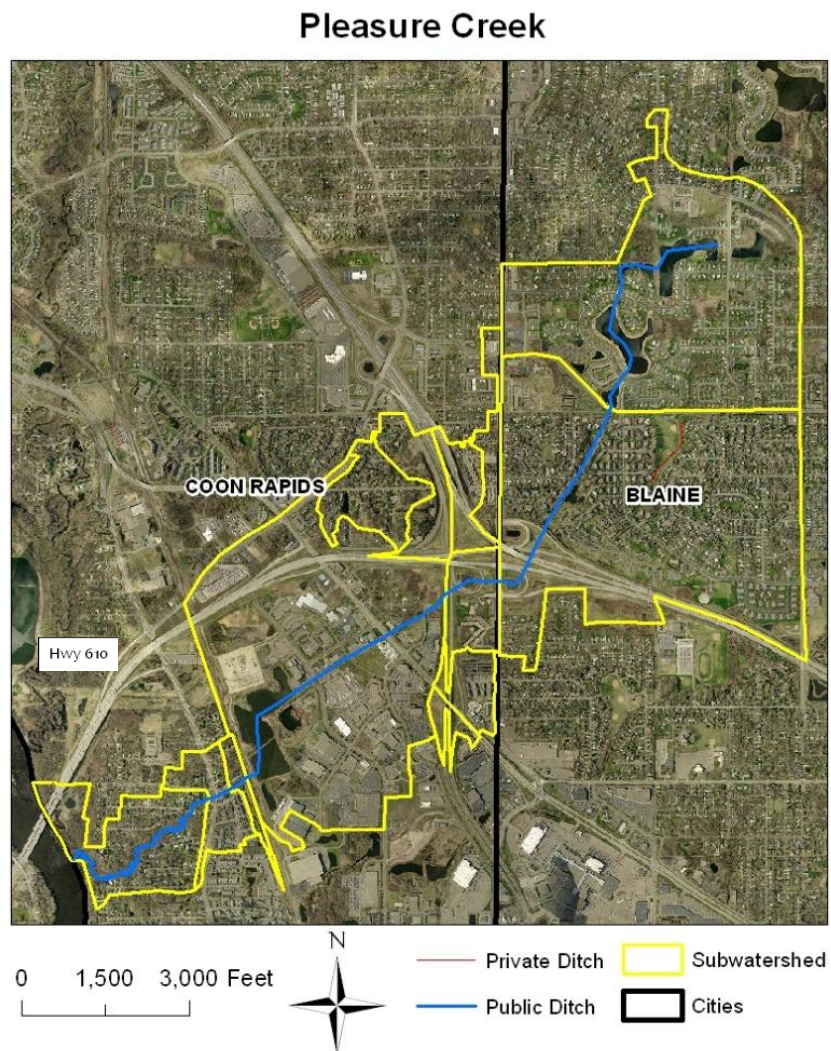
The system is approximately 3.97 miles in length. Its watershed is approximately 2.96 square miles in size.

The confluence between Pleasure Creek and the Mississippi River is located south of Highway 610 in Coon Rapids, MN.

The headwaters of Pleasure Creek are located at the stormwater pond near Jackson Street in Blaine, MN.

Pleasure Creek contains no public lateral ditches.

No private agricultural ditches discharge to Pleasure Creek.



**Figure 1:** Pleasure Creek watershed  
Coon Rapids & Blaine, MN.

## Inspection Methods

Pleasure Creek was inspected by the CCWD Operations & Maintenance Coordinator. The inspection was conducted using a Trimble TSC2 and R8 GPS unit. Elevation accuracy was required to be within 0.10 feet vertical.

Points were surveyed every 100 feet, where possible, and were started at the outlet at the Mississippi River and went upstream. Cross sections were taken every 500 feet to measure the top of slope, toe of slope, and center line. Channel and sideslope characteristics were identified. Substrate type and general condition were recorded. All public and private crossings were surveyed and culverts sized and typed. Photographs were taken at inspection points and at crossings.

## Results

Overall, Pleasure Creek is considered in Fair condition. Sixty-five concerns were found. These concerns are listed and some are shown below:

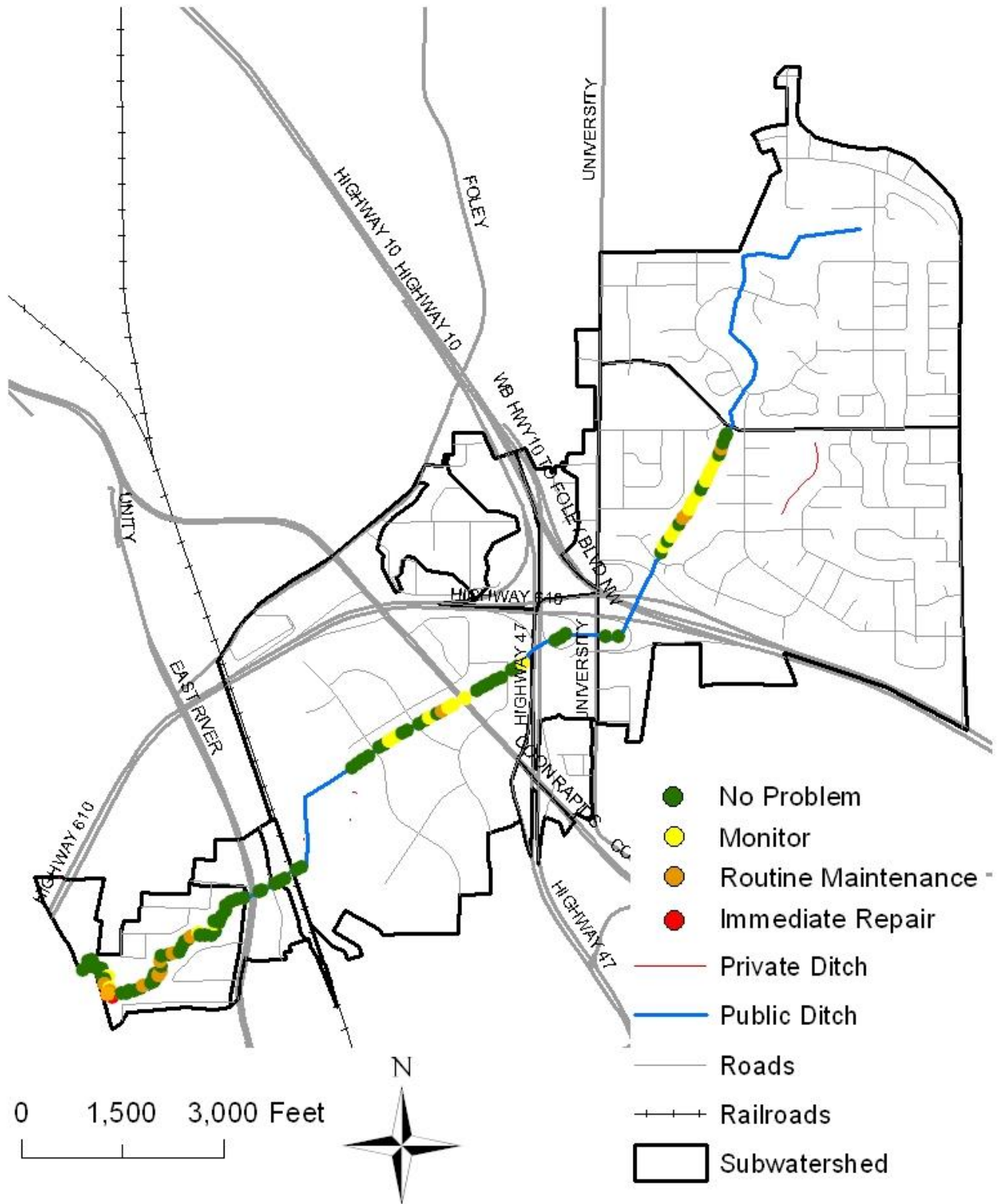
**Table 1:** Pleasure Creek Maintenance Needs

Criticality	Station	Description
Priority Repair	11+73	Obstruction- tree removal
	51+00	Obstruction-culvert, trash
	56+10	Obstruction-culvert, trash
	139+38	Obstruction-culvert, trash
Repair	12+00	Gutter Down Spout
	17+65	Erosion
	17+65	Obstruction
	21+32	Obstruction
	23+40	Erosion
	23+40	Obstruction
	25+00	Obstruction
	31+00	Obstruction
	33+90	Leaves
	34+20	Erosion
	36+92	Obstruction
	45+70	Erosion
	60+00	Trash-Rail Road
	93+80	Brush
	94+83	Gravel Dump
	97+00	Brush
	98+00	Excess Vegetation
	100+52	Wood Weir
	109+00	Excess Vegetation
	143+00	Brush
	145+00	Brush
	146+05	Obstruction
	147+84	Brush
	152+00	Brush
158+10	Obstruction	

**Table 2:** Pleasure Creek Concerns listed by number found

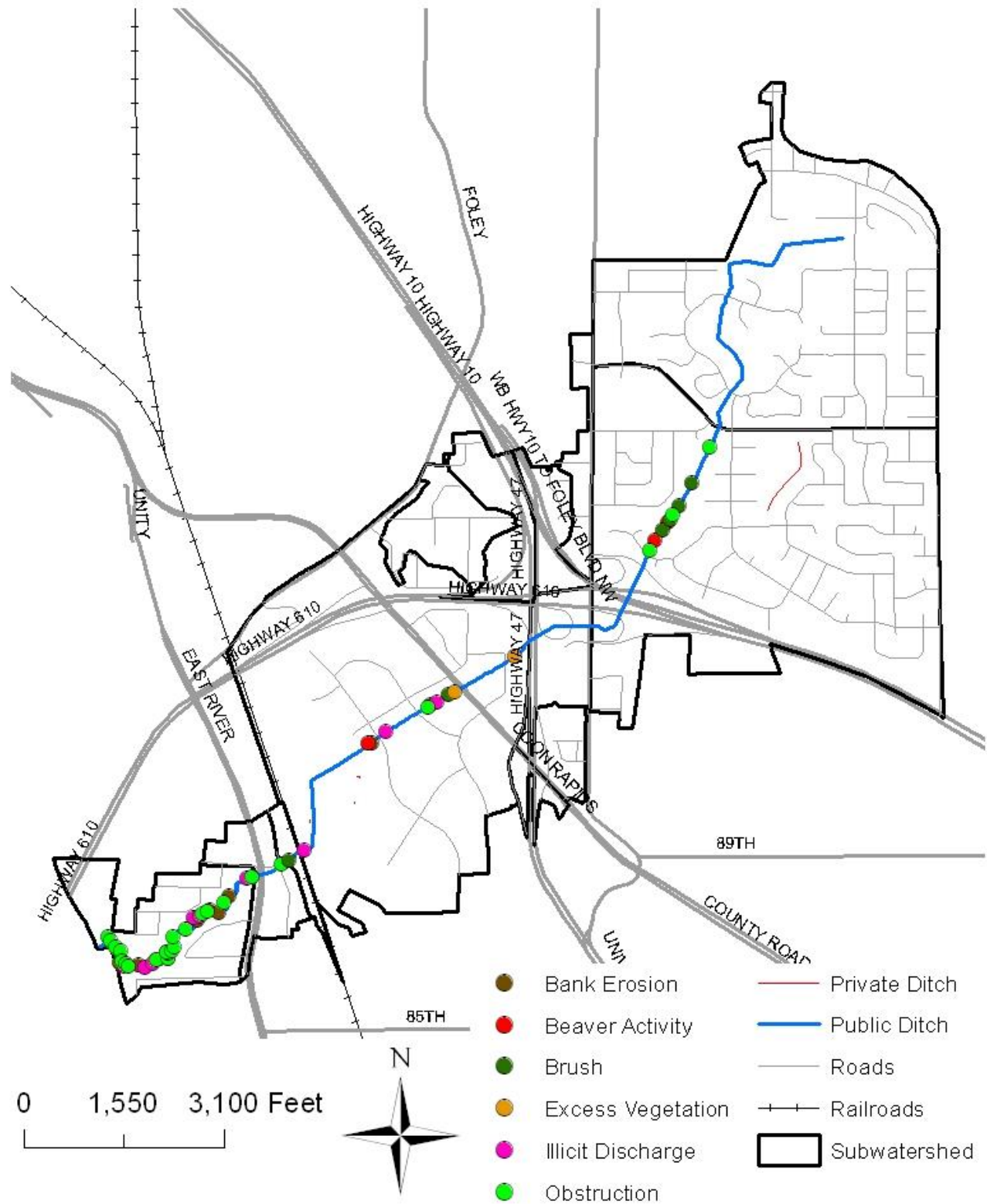
n	Concerns
24	Obstruction
10	Erosion
6	Brush
6	Drain Pipe
4	Unknown Outfall
3	Beaver Activity
3	Leaves
2	Excess Vegetation
2	Pump
1	Gravel Dump
1	Gutter Down Spout
1	Organic Dumping
1	Trash-Railroad
1	Wood Weir

# Pleasure Creek Channel Condition

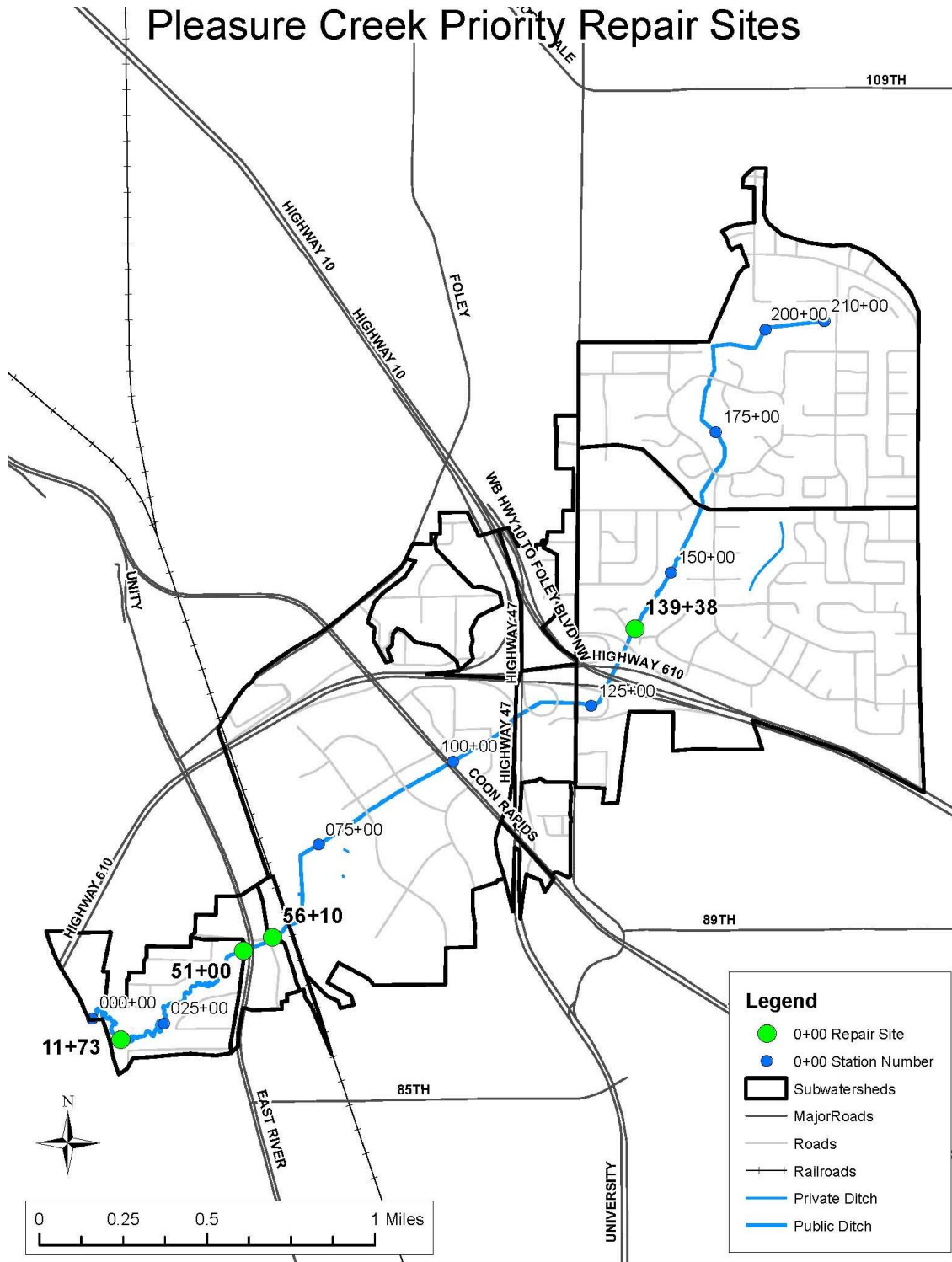


**Figure 2:** Pleasure Creek channel condition.  
 Values resemble conditions at time of survey.

# Pleasure Creek Maintenance Needs

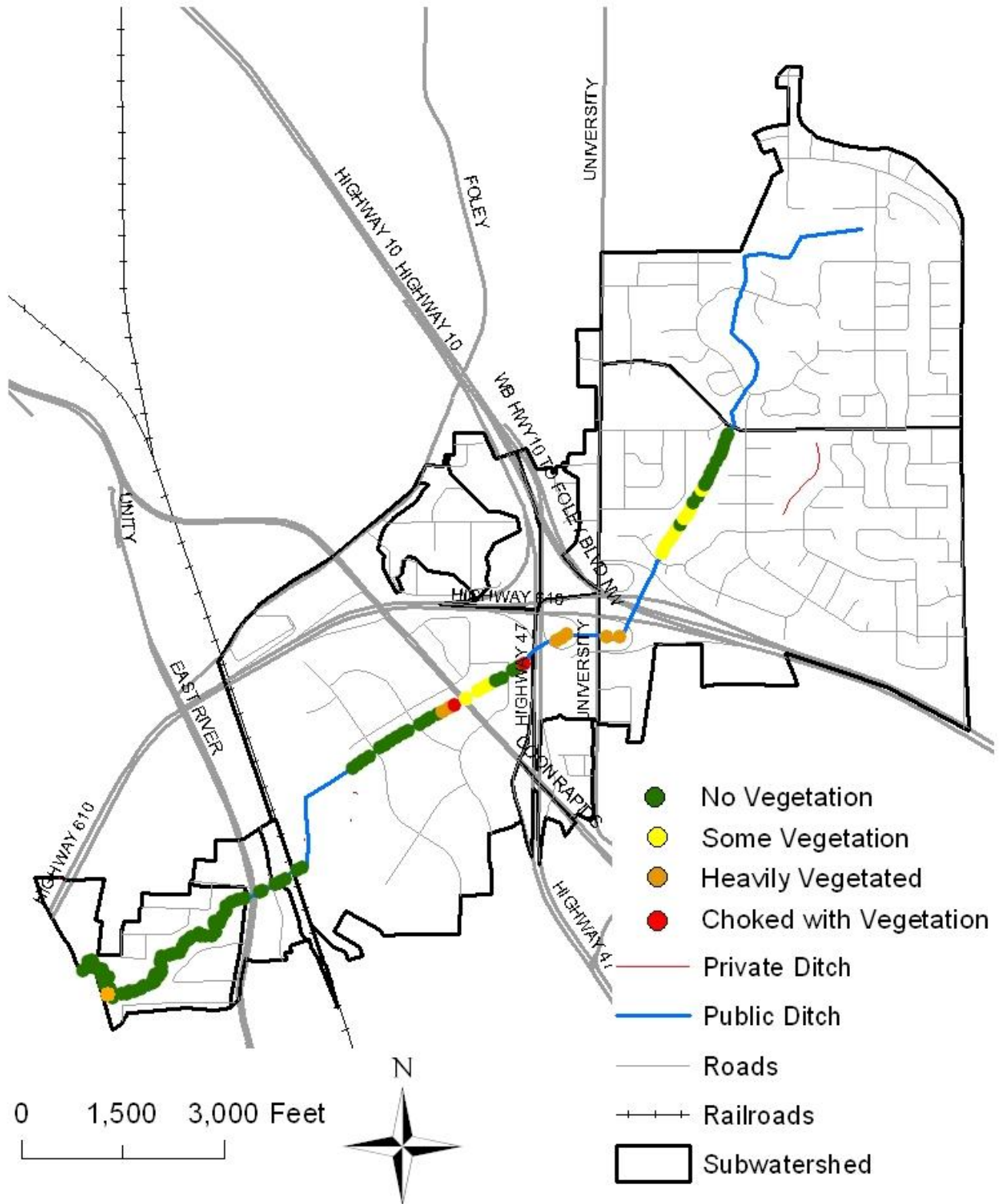


**Figure 3:** Pleasure Creek maintenance needs  
 Values resemble conditions at time of survey.



**Figure 4:** Pleasure Creek priority repair sites.  
 Values resemble conditions at time of survey.

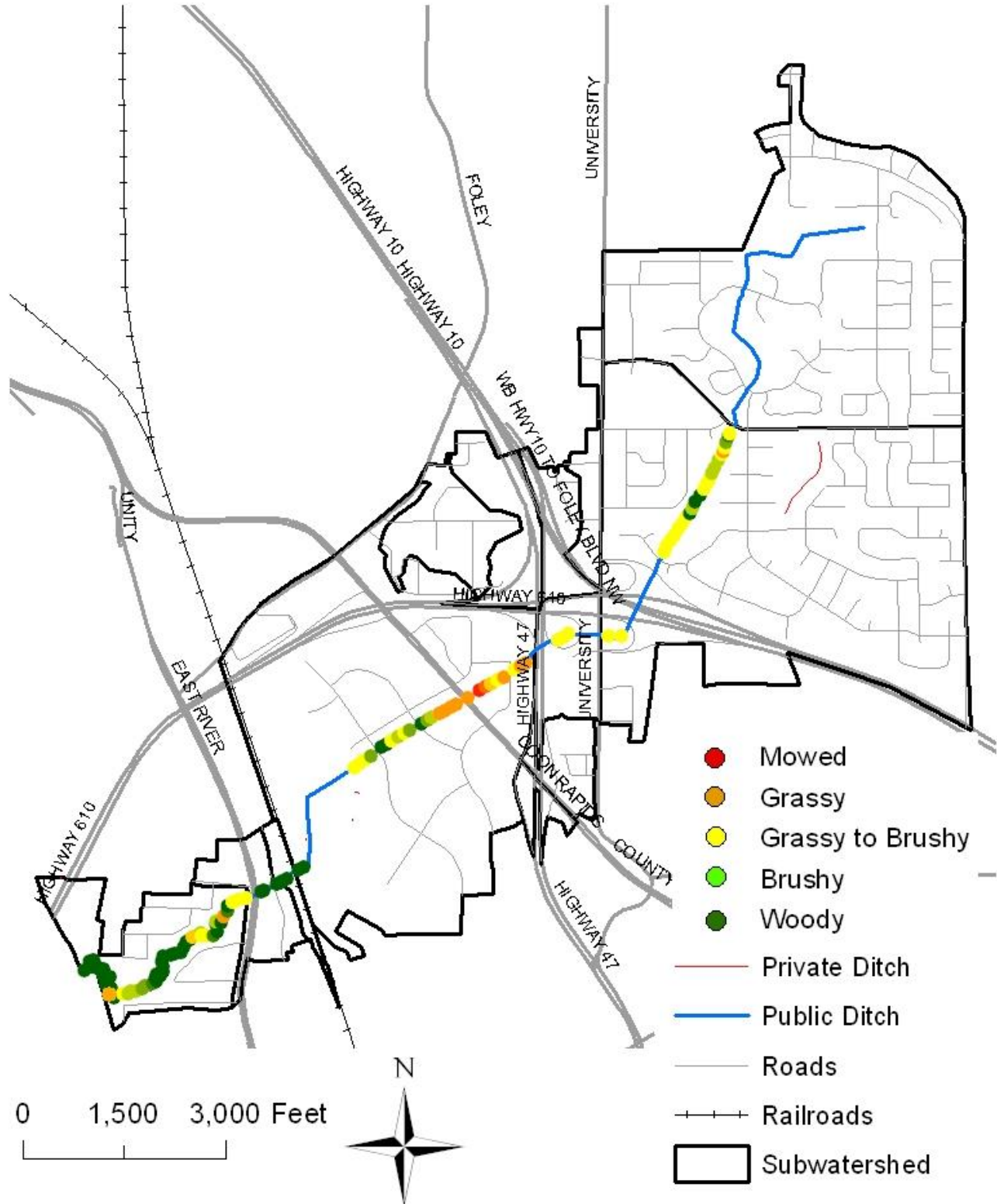
# Pleasure Creek Channel Vegetation



**Figure 5:** Pleasure Creek channel vegetation descriptions. Values resemble conditions at time of survey.



# Pleasure Creek Side Slope Vegetation

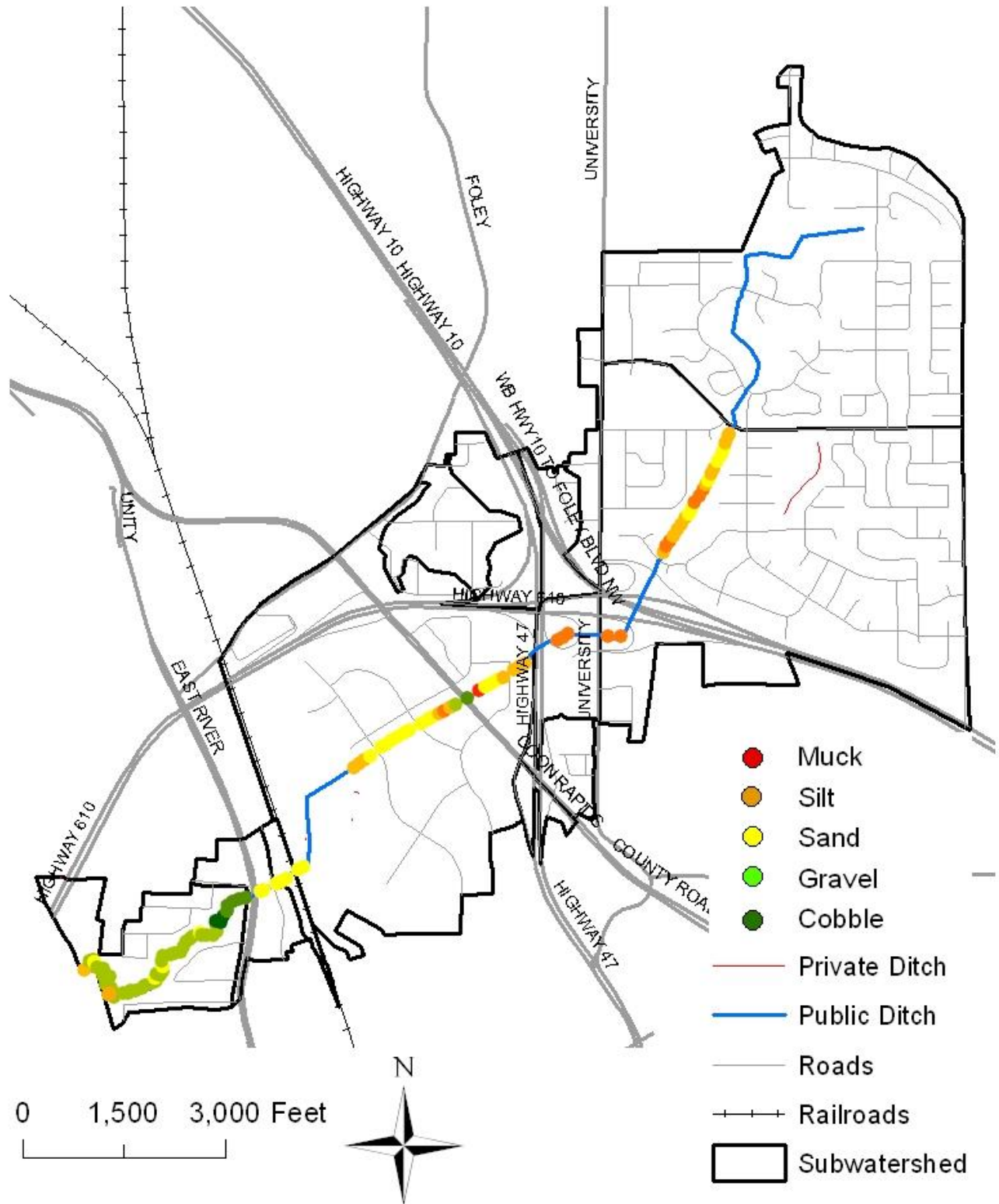


0 1,500 3,000 Feet



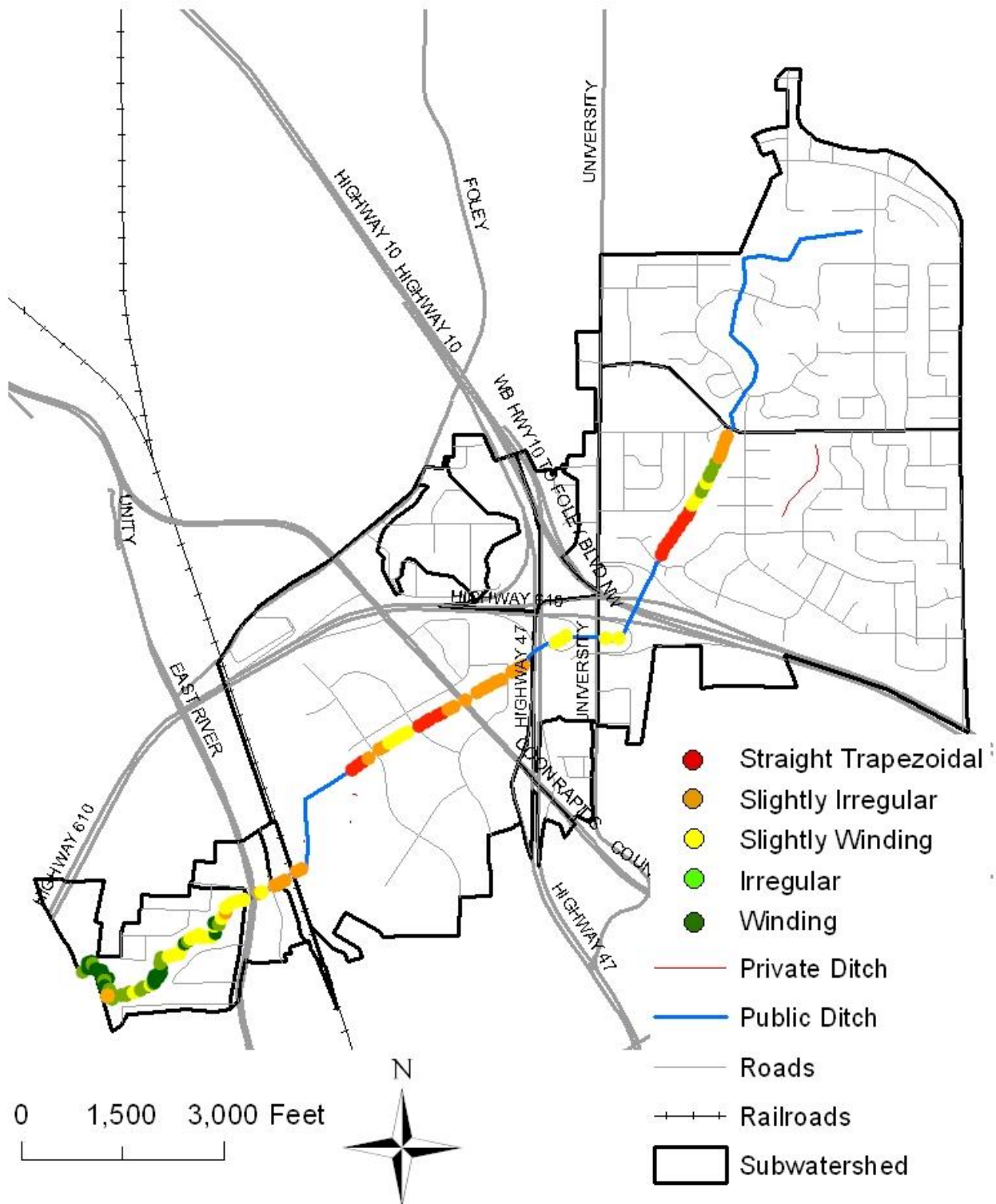
**Figure 6:** Pleasure Creek side slope vegetation descriptions. Values resemble conditions at time of survey. Legend descriptions ordered by severity.

# Pleasure Creek Substrate



**Figure 7:** Pleasure Creek substrate descriptions. Values resemble conditions at time of survey. Descriptions ordered from small to large particles.

# Pleasure Creek Channel Description



**Figure 2:** Pleasure Creek channel descriptions.  
 Values resemble condition at time of survey.

## Some Concerns

Large obstruction in lower portion of creek.  
Water is being diverted into bank, causing erosion.



Obstructed trash rack on upstream end of East River Road.  
Temporarily relieved 5-9-2012.



**Obstructed trash rack on upstream end of Norway Street.  
Temporarily relieved 5-9-2012.**



**Structure on upstream end of Rail Road.  
Accumulation of debris.**



**Fish barrier on upstream end of Evergreen Blvd.**



**Fish barrier on upstream end of Holly Street NW.**



**Pond created by wood weir upstream of Coon Rapids Blvd.  
Accumulation of animal feces (primarily goose).**



**Obstructed trash rack on upstream end of 96<sup>th</sup> Lane NE.  
Temporarily relieved 5-18-2012.**

