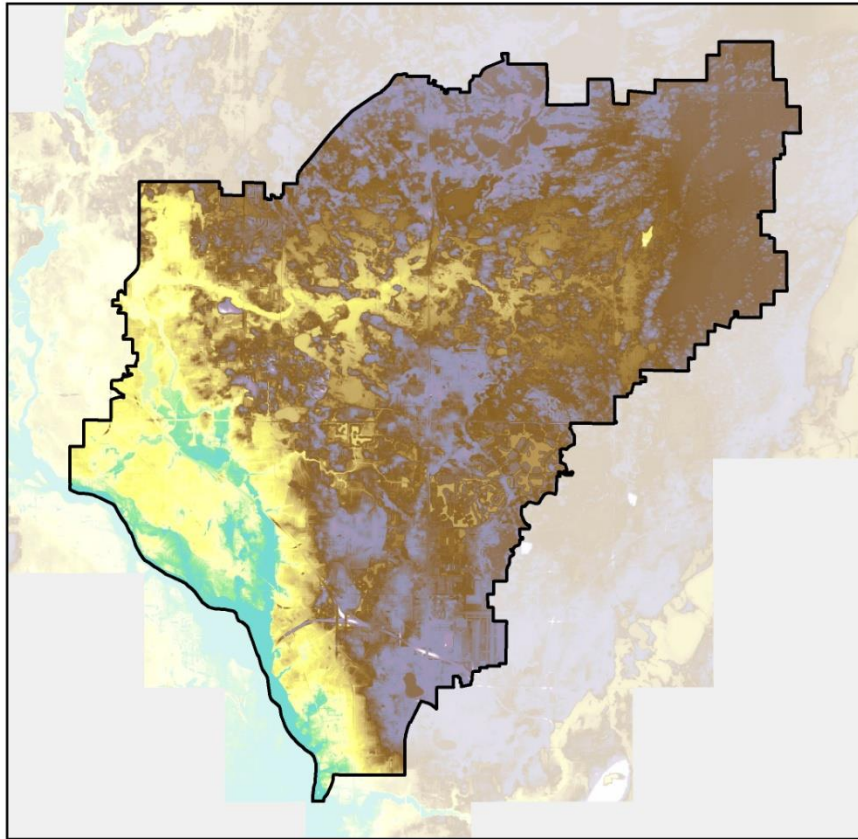


Draft

Watershed Management Plan

Coon Creek Watershed District

2013 to 2023



# Coon Creek Watershed District

## Board of Managers

---

Scott	Bromley
Warren	Hoffman
Brad	Johnson
Bill	MacNally
Byron	Westlund

## Staff

---

Tim Kelly	District Administrator
Ed Matthiesen	District Engineer – Wenck & Associates
Michelle Ulrich	Attorney
Harold Sheff	Attorney
Diana Shonyo	Administrative Assistant
Dawn Doering	Information and Education Coord.
Tom Gile	Regulatory Affairs Coordinator
T.J. Helgeson	WRAPP Coordinator
Jon Janke	Operations & Maintenance Coord.
Justin Hawley March	GIS Specialist – Flat Rock Geographics

---

### Citizen Advisory Committee

Scott Bromley	Coon Creek WD
Carol LeDoux	Anoka County
Jim Lindahl	Anoka Conservation District
Gary Nereson	Crooked Lake Area Assn
Jeff Simon	
Diana Perron	
Michael Von Wald	
Bill Kurdziel	
Roger Johnson	
Donna Bahls	

---

### Technical Advisory Committee

Dave Berkowitz	Andover
Jim Hafner	Blaine
Elizabeth Mursko	Columbus
Tim Himmer	Coon Rapids
Jim Kosluchar	Fridley
Tom Collins	Ham Lake
Phil Gravel, Stantec	Spring Lake Park

<b>Tab</b>	<b>Section</b>	<b>Page</b>
	<b>Executive Summary</b>	i
	<b>Plan Summary</b>	ix
<b>1</b>	<b>INTRODUCTION</b>	<b>1</b>
	<b>Introduction</b>	
	Introduction	
	Background	
	Legislative Mandates	2
	District Responsibilities	
	<b>Mission and Roles</b>	<b>3</b>
	Mission Statement	
	District Roles	
	<b>Whom We Serve</b>	<b>4</b>
	Communities and Boundaries	
	Primary Service Audience	6
	Partnerships and Coordination	
	<b>Service Focus</b>	<b>7</b>
	Maintain or Improve Conditions	
	Prevent Damage	
	Enhance Use	
	Restore Damage	
	<b>Guiding Principles</b>	<b>8</b>
	Service	
	Partnerships	
	Evidence-based Practice	9
	Technical Excellence	
	Performance/Outcome-Based Management	
	Hydrological Processes	10
	<b>Programs and Activities</b>	<b>11</b>
	Administration	
	Development Regulation and Issue Management	
	Operations and Maintenance	12
	Planning, Programming and Budgeting	
	Public and Government Relations	13
	Research and Monitoring	
	<b>Overarching Strategies</b>	<b>14</b>
	Collaborative Management	
	Watershed Approach	15
	Market-based Approach	17
	Adaptive Management	19
	Management Areas and Subwatersheds	19
<b>2</b>	<b>GOALS and OBJECTIVES</b>	<b>23</b>
	Background	
	Mission Goals	
	Issue Goals	
<b>3</b>	<b>MISSION GOALS</b>	<b>25</b>
	Introduction	
	Mission Goals	
	Outcome Statements	
	Objectives	
<b>4</b>	<b>GOAL 1: PREVENTING PROPERTY DAMAGE</b>	<b>27</b>
	Goal Statement	

	Objectives	
	Introduction	
	Current Situation	
	Strategies, Actions and Tasks to Achieve Goal	
<b>5</b>	<b>GOAL 2: ENSURING HYDROLOGIC BALANCE</b>	<b>37</b>
	Goal Statement	
	Objectives	
	Introduction	
	Current Situation	
	Strategies, Actions and Tasks to Achieve Goal	
<b>6</b>	<b>GOAL 3: ENSURING WATER QUALITY</b>	<b>45</b>
	Goal Statement	
	Objectives	
	Introduction	
	Current Situation	
	Strategies, Actions and Tasks to Achieve Goal	
<b>7</b>	<b>GOAL 4: PROVIDING for BENEFICIAL USES</b>	<b>57</b>
	Goal Statement	
	Objectives	
	Introduction	
	Current Situation	
	Strategies, Actions and Tasks to Achieve Goal	
<b>8</b>	<b>GOAL 5: PRESERVE and ENHANCE WILDLIFE HABITAT</b>	<b>63</b>
	Goal Statement	
	Objectives	
	Introduction	
	Current Situation	
	Strategies, Actions and Tasks to Achieve Goal	
<b>9</b>	<b>ISSUE GOALS</b>	<b>71</b>
<b>10</b>	<b>ISSUE 1: AQUATIC INVASIVE SPECIES</b>	<b>73</b>
	Issue Statement	
	Goal Statement	
	Objectives	
	Introduction	
	Current Situation	
	Strategies, Actions and Tasks to Achieve Goal	
<b>11</b>	<b>ISSUE 2: PRECIPITATION CHANGE</b>	<b>83</b>
	Issue Statement	
	Goal Statement	
	Objectives	
	Introduction	
	Current Situation	
	Strategies, Actions and Tasks to Achieve Goal	
<b>12</b>	<b>ISSUE 3: DECLINING REGIONAL GROUND WATER AND THE EFFECT ON GROUND WATER DEPENDENT RESOURCES</b>	<b>89</b>
	Issue Statement	
	Goal Statement	
	Objectives	
	Introduction	
	Current Situation	
	Strategies, Actions and Tasks to Achieve Goal	
<b>13</b>	<b>IMPLEMENTATION</b>	<b>109</b>

	Purpose	
	Intent	
	Scope	
	District Priorities	
	Goals and Objectives	
	Management Overview	
	Implementation Plan Structure	
<b>14</b>	<b>FUNDS AND FUNDING STRATEGY</b>	
	Current Situation	<b>119</b>
	Goals and Objectives	
	Fiscal Capacity	
	Accounting Auditing and Financial Reporting Policy	
	Budget Development Process	
	Revenue Sources and Policies	
	Capital Improvement Policies and Funding	
	Funding Strategy	
<b>15</b>	<b>MEANS and METHODS of DOING BUSINESS</b>	
	Goals	<b>135</b>
	Policies	
	Ways of Doing Business	<b>136</b>
<b>16</b>	<b>PROGRAMS AND ACTIVITIES</b>	
	Administration	<b>139</b>
	Development Regulation	<b>149</b>
	Operations & Maintenance	<b>165</b>
	Planning Programming & Budgeting	<b>175</b>
	Public and Governmental Relations	<b>199</b>
	Research & Monitoring	<b>229</b>
<b>17</b>	<b>POLICIES and PROCEDURES</b>	<b>239</b>
	Ditches and Watercourses	<b>240</b>
	Floodplains	<b>242</b>
	Groundwater	<b>243</b>
	Soils and Erosion Control	<b>244</b>
	Stormwater	<b>245</b>
	Water Quality	<b>247</b>
	Wetlands	<b>250</b>
	Wildlife	<b>253</b>
<b>18</b>	<b>PARTNERSHIPS and COLLABORATION</b>	
	Introduction	<b>255</b>
	Goals and Objectives	<b>256</b>
	Current Situation	<b>257</b>
	Anoka Conservation District	
	Strategies to Achieve Goal	<b>259</b>
	Policies	<b>260</b>
	Cooperative Relations	
	Cooperative Management	<b>261</b>
	Watershed Protection	<b>262</b>
	Subwatershed Studies and Special Area Management Plans	
	Flood Prevention	<b>263</b>
	Emergency Protection and Natural Disaster Response	
	Interagency Programs and Projects	<b>264</b>
	Hydrologic Surveys and Analysis	
	Additional District Program Actions	

<b>19</b>	<b>CAPITAL IMPROVEMENT PROGRAM</b>	
	Goals and Objectives	277
	Purpose	278
	Public Participation	279
	Capital Expenditure Categories	
	Capital Project Authorization Process	280
	Capital Project Authorization Timeframe	282
	Capital Improvement Policies	
	Implementation Schedule	283
<b>20</b>	<b>PROGRAM SUMMARY</b>	
<b>21</b>	<b>CAPITAL PROJECTS</b>	
	New Drainage, Stormwater of Water quality Facilities	288
	Ditch and Streambank Repair & Maintenance	289
	Streambank Stabilization and Repair	307
	Retrofits to Existing Stormwater Infrastructure	321
	Stormwater Treatment Device Construction, Maintenance Rehabilitation	327
	Studies and Special Area Management Plans	328
<b>22</b>	<b>CAPITAL EQUIPMENT</b>	
<b>23</b>	<b>FUNDING OPTIONS</b>	
	Special Assessment	338
	Grant Eligible	339
	State Clean Water Fund Eligible	343
	State Cost Share Funds	346
	Clean Water & Cost Share Funds	349
	Clean Water Partnership Funds	354
<b>24</b>	<b>EVALUATION</b>	
	Goals	355
	Overview	
	Program Evaluations	357
	Measuring Implementation Progress	358
	Annual Evaluations Used to Revise Goals and Objectives	360
	Schedule of Future Program Evaluations	361
	<b>APPENDIX</b>	
<b>25</b>	<b>Appendix A - Overview of the Coon Creek Watershed</b>	
	Location	A-1
	Ecological Setting, Land Type Associations and Land Types	A-2
	Land Type: Glacial Lake Hugo Lake Plain	A-7
	Land Type: Glacial Lake Fridley Lake Plain	A-17
	Land Type: Mississippi River Terrace	A-21
<b>26</b>	<b>Appendix B - Resource Assessment</b>	
	Introduction	B-1
	Watershed Area	B-3
	Precipitation	B-5
	Evapotranspiration	B-9
	Groundwater Storage and Flux	B-11
	Stream Flow	B-17
	Soils	B-23
	Depression Storage	B-29
	Land Use & Cover	B-31
	Lakes	B-35
	Wetlands	B-41
	Water Quality	B-47

	Wildlife	<b>B-71</b>
<b>27</b>	<b>Appendix C - Demand for and Value of the Beneficial Uses of Water in The Coon Creek Watershed District</b>	
	Demand	<b>C-3</b>
	Definitions	<b>C-4</b>
	Approach to Assessing Demand and Value	<b>C-6</b>
	Beneficial Uses	<b>C-7</b>
	People's Preferences	<b>C-11</b>
	Aesthetics	<b>C-13</b>
	Aquatic Life and Recreation	<b>C-23</b>
	Drainage	<b>C-39</b>
	Drinking Water	<b>C-59</b>
	Flood Control	<b>C-81</b>
	Groundwater Recharge	<b>C-107</b>
	Irrigation	<b>C-123</b>
	Water Quality	<b>C-137</b>
<b>28</b>	<b>Appendix D - Management Assessment: Legal, Institutional, and Economic Framework for Water and</b>	
	History – Chronology of Milestone Events	<b>D-3</b>
	Statutory Obligations	<b>D-7</b>
	Statutory Requirements	<b>D-10</b>
	Statutory Abilities	<b>D-13</b>
	Analysis of Management Principles and Resource Concerns Emphasized in Minnesota State Statutes	<b>D-14</b>
	Mission Statement	<b>D-17</b>
<b>29</b>	<b>Appendix E - Plan Amendment and Local Plan Approval Process</b>	
	Identifying Amendment Needs	<b>E-1</b>
	Public Notification	
	Amendment Process	<b>E-2</b>
	Certification and Approval of Local Water Plans	
	State and Regional Facilities - Water Plans	
<b>30</b>	<b>Appendix F - Public Involvement in the Planning Process</b>	
	Original Planning Process	<b>F-1</b>
	Initial Planning Issues and Concerns	
	Involvement	<b>F-3</b>
	Planning Advisory Committee	
	Merger with Six Cities WMO	<b>F-4</b>
	Adjustments in the Planning and Public Participation Process	
	Rough Draft Review as Reality Check	
<b>31</b>	<b>Appendix G - Assessment of the Functional Capacity of Wetlands within the Coon Creek Watershed</b>	
	Goals and Objectives	<b>1</b>
	Approach	
	Definitions	
	Applications and Limitations of the Approach	<b>2</b>
	Use of Reference Wetland Data in Refining the Procedure	
	Description of the Anoka Sand Plain/Anoka Lake Plain	<b>3</b>
	Hydrogeomorphic Classes of Wetlands within the Watershed	<b>7</b>
	Depression & Swale Wetlands	<b>8</b>
	Lacustrine Wetlands	<b>10</b>
	Riverine/ Floodplain Wetlands	<b>12</b>
	Slope/Bog/Flats Wetlands	<b>13</b>
	Functions Performed by Hydrogeomorphic Classes	<b>15</b>
	Modification of Ground Water Discharge	
	Modification of Ground Water Recharge	<b>16</b>

	Storm and Flood Water Storage	
	Modification of Stream Flow	<b>17</b>
	Modification of Water Quality	<b>18</b>
	Contribution to Abundance & Diversity of Wetland Vegetation	<b>19</b>
	Contribution to Abundance & Diversity of Wetland Fauna	
	Findings	<b>29</b>