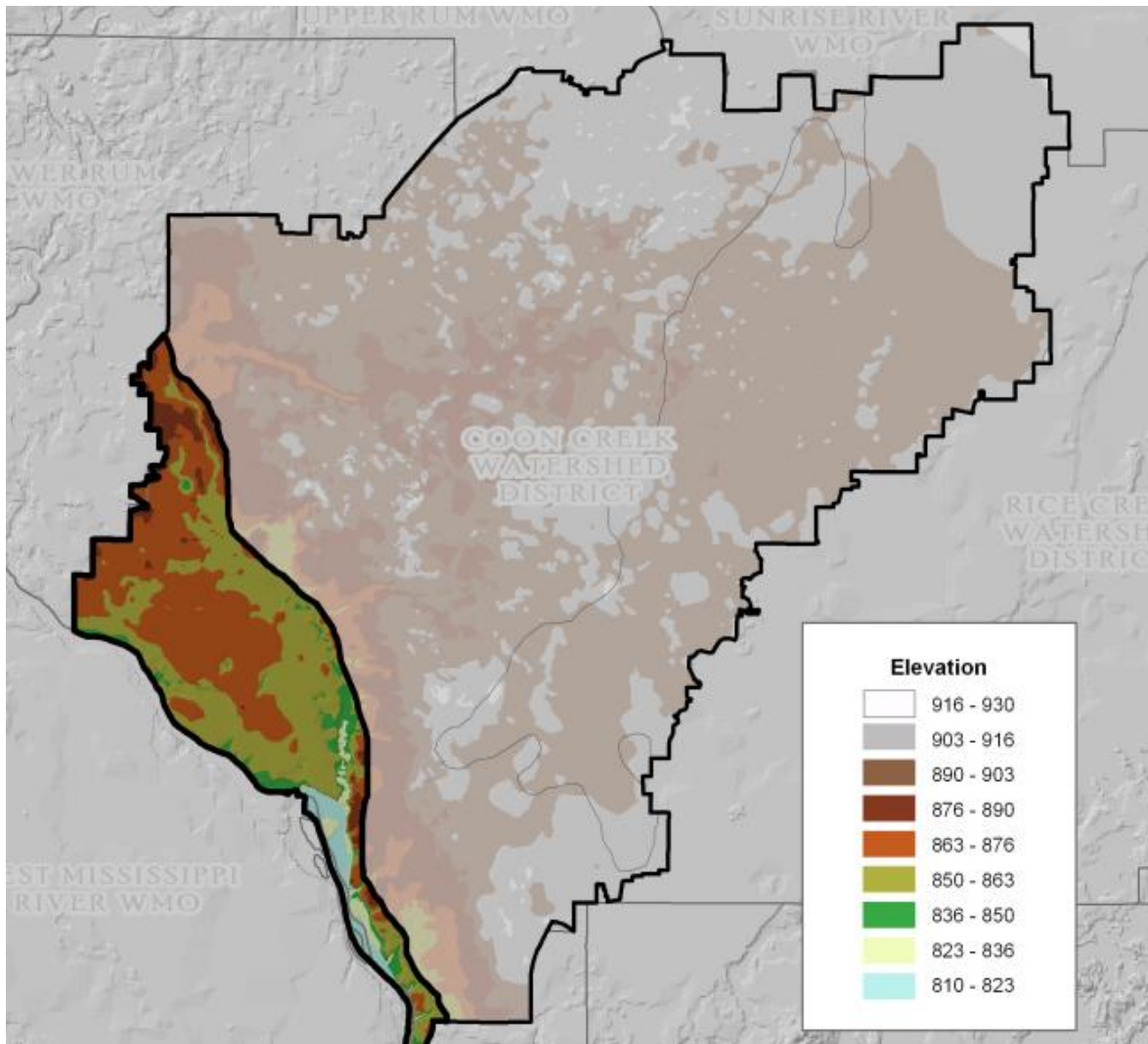


Mississippi Sand Plain

Occurrence

The Mississippi River Terrace occurs west of the Burlington Northern Railroad tracks which define most of the eastern boundary.

The Coon Creek portion of the Mississippi River Terrace is approximately 8,736 acres (13.7 sq mi). This comprises about 13% of the watershed.



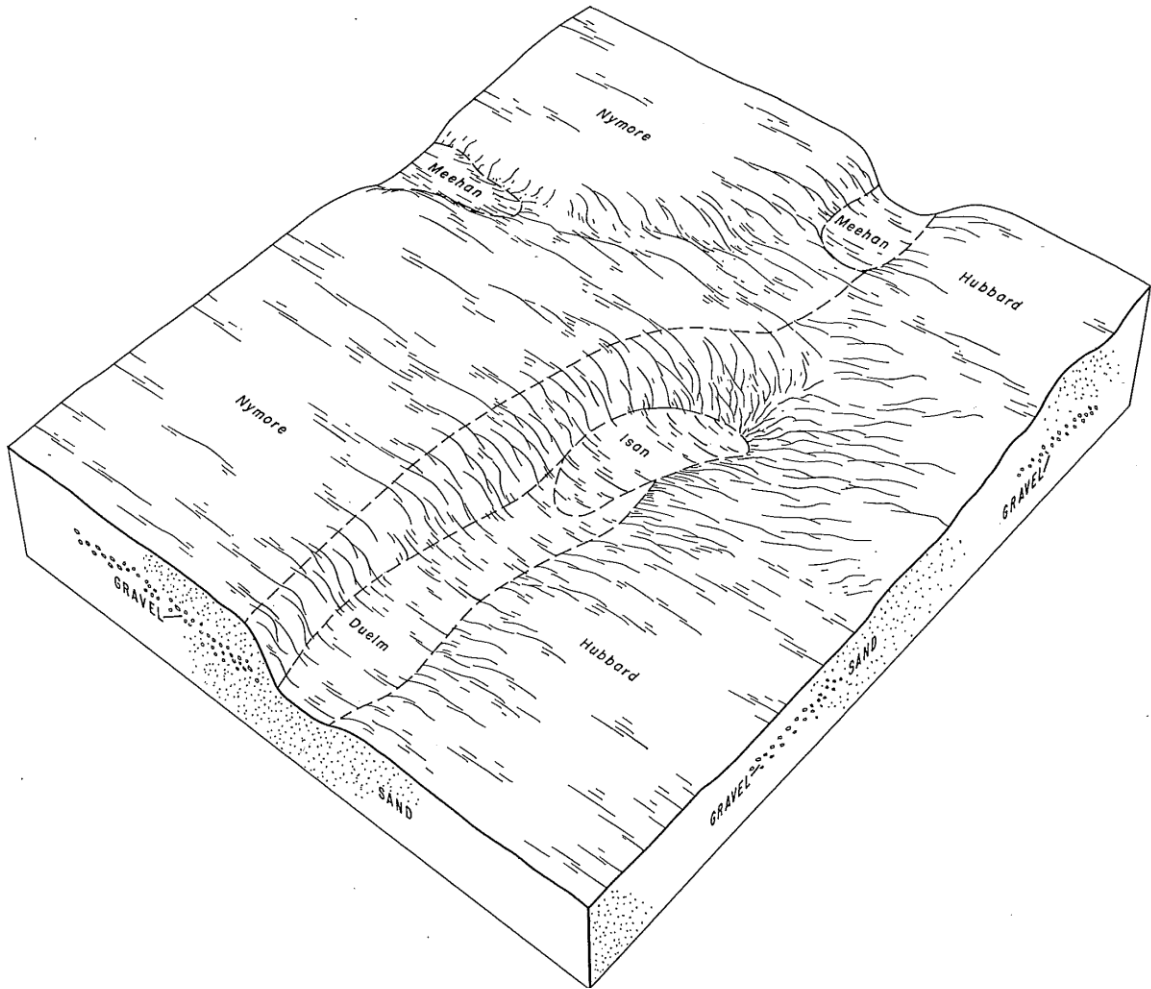
Landscape

This land type is a nearly-level to gently sloping outwash plain that is dissected by drainageways that historically lead to the Mississippi River. The area is pitted by large depressions. Steeper slopes occur next to these larger depressions and drainageways.

Elevations range from 890 to 810 FASL.

The average slope is 1.4%.

Mississippi Sand Plain



Soils

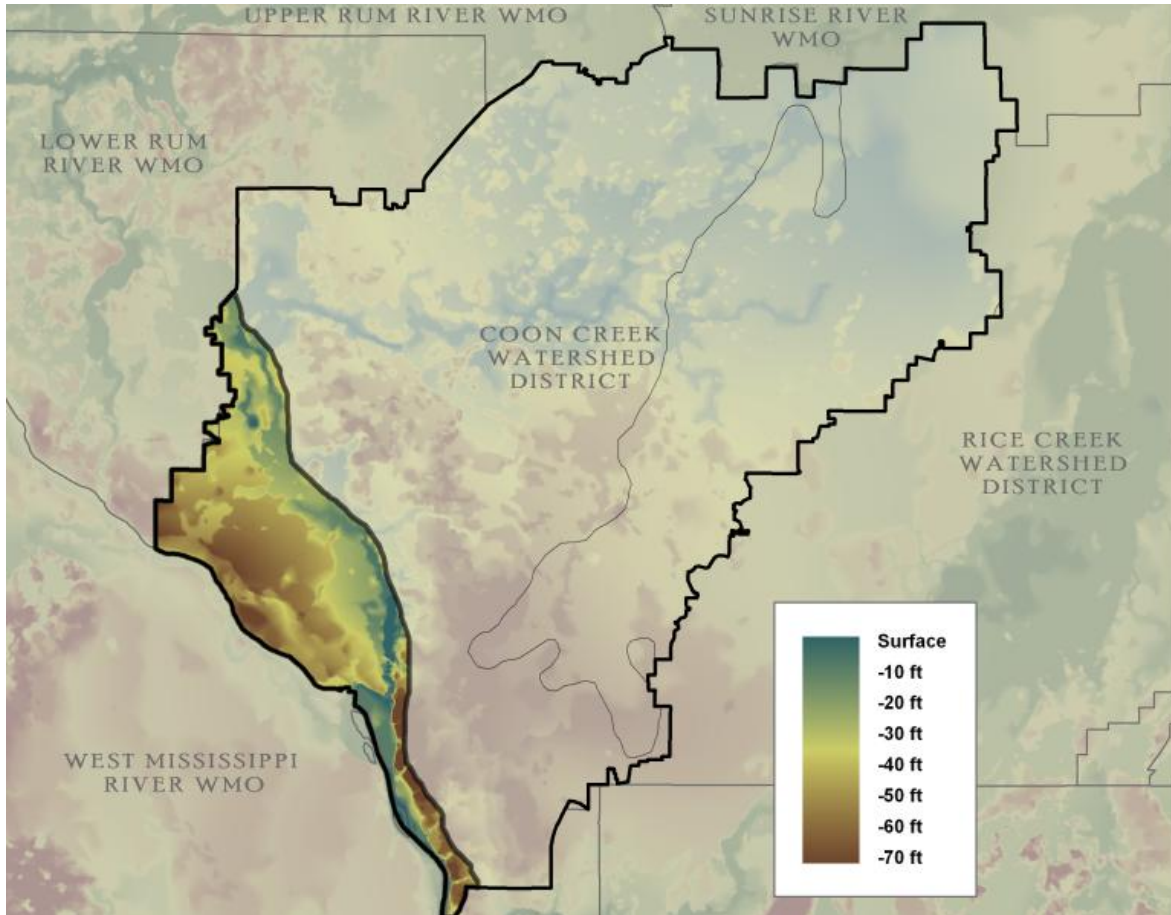
Soils tend to be excessively drained and sandy throughout.

Hydrologic Soil Group	Presettlement	Current	Change
A-Well Drained	67%	79%	12%
B-Moderately Well Drained	3%	6%	3%
D-Very Poorly Drained	22%	7%	-15%

Surficial Groundwater

Water Table	Historic Depth (Ft)	Current Depth (Ft)	Change (Ft)
Average	17	22	-5
Maximum	74	80	-6

Mississippi Sand Plain



Ditches and Water Courses

The Mississippi Sand Plain has approximately 141 miles of creek, ditch and storm sewer:

Channels (Public)	19.2 miles
Channels (Private)	11.0
Channels (Total)	30.2
Stormsewer	110.9
Total	141.1
Drainage Density	10.3 Per Square Mile

Imperviousness

Approximately 28% of this land type is impervious.

Land use	Acres	% Land Type	% Imperv	Imperv Acres
Agriculture	91	1%	5%	5
Commercial	645	7%	70%	451
Industrial	143	2%	50%	71
Major Hwy	243	3%	40%	97
Multi-Fam.	601	7%	5%	30
Residential				
Park & Rec.	1,130	13%	30%	339
Public /	430	5%	35%	151

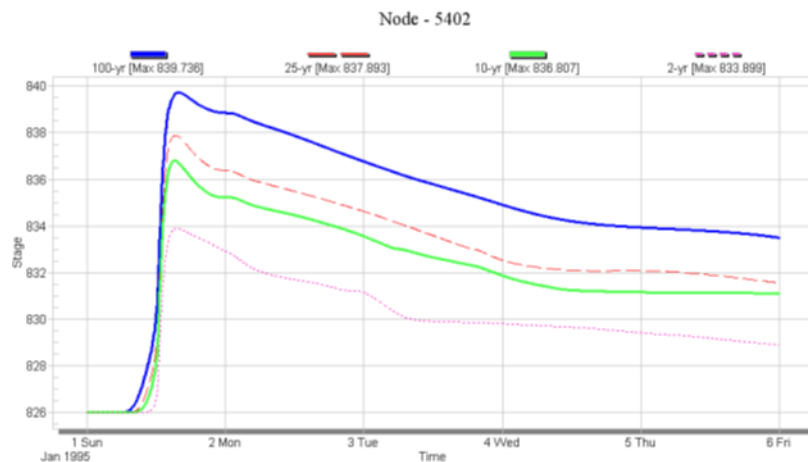
Mississippi Sand Plain

Semipublic				
Single Fam. Residential	4,056	46%	25%	1,014
Vacant	1,009	12%	5%	50
Water	322	4%	100%	322

Stormwater

Coon Creek near the Mississippi River

	1999	2009	Change	% Change
Time to Peak (Hrs)	40.5	24		
100 yr Elevation	842.1	839.7		
Peak Discharge (cfs)	2,195.4	650		
Flow Duration on 2 year event (days)		12		



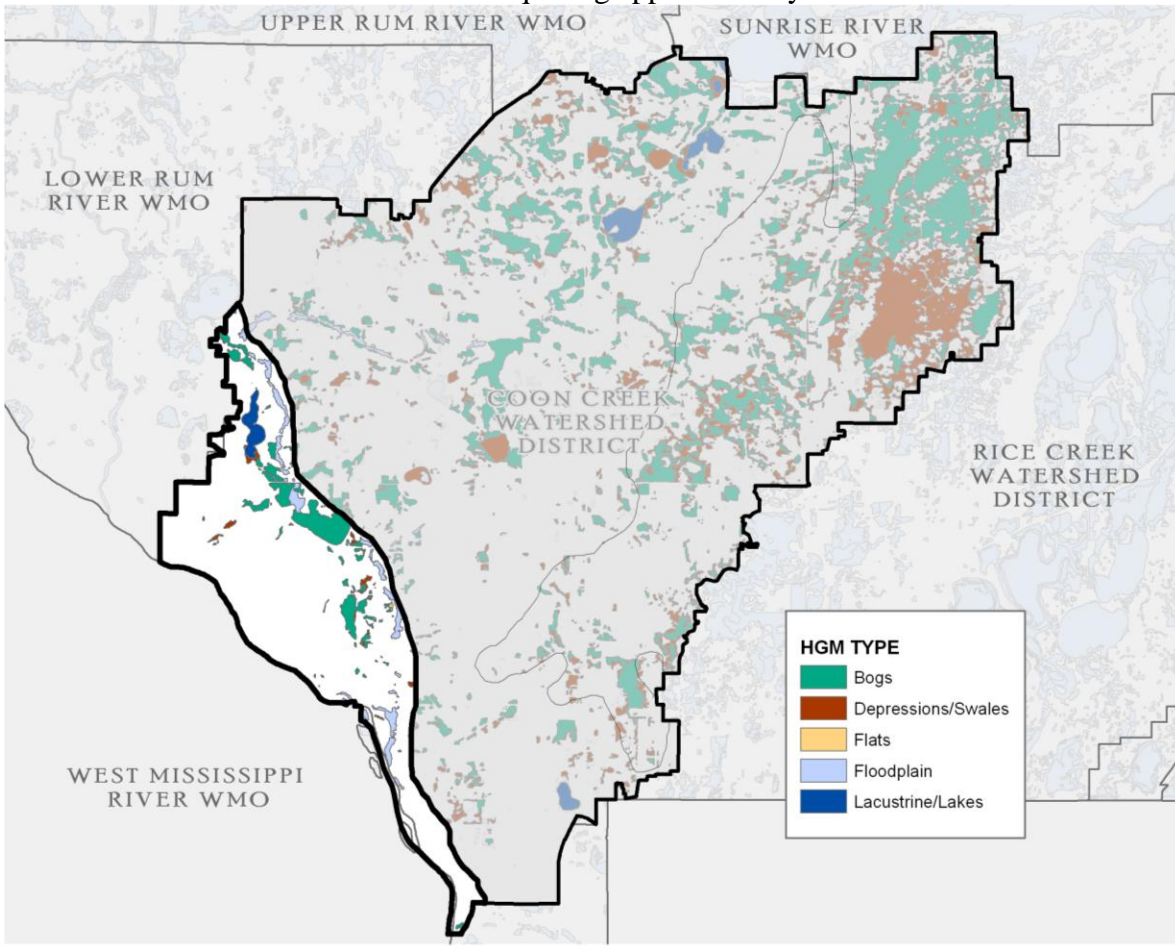
Water Quality

	Standard	Base Flow	Storm
Chloride	≥230 mg/L	73.8	54.4
Dissolved Oxygen	<6.3 mg/L	9.4	7.6
Total Phosphorus	.130 mg/L	.09	.16
Total Suspended Solids	>13.7 mg/L	10.3	119.5
Turbidity	>25 FRNU	10	121

Lakes & Wetlands

The Mississippi River Terrace has one lake plus Lacustrine

wetlands equaling approximately 148 acres.



Name	Nature	ID	Size (AC)	Littoral Zone (%)	Max Depth (ft)	Clarity (ft)	Cond.	TSI
Cenaiko	Man Made	020654	28.6	40%	36	5.4		
Crooked	Shallow Lake	020084	118.3	73%	26	8.5	B	51

Wetlands

The Mississippi River Terrace contains approximately 1,068 acres of wetland. Approximately 86% of these wetlands are ephemeral in nature relying on saturated, seasonal hydrology to sustain their wetland characteristics.

Hydrogeomorphic classification	Acres	% Land Type
Bogs	571.1	53%
Depressions/ Swales	75.5	7%

Flats	6.5	1%
Floodplains	295.1	28%
Lacustrine	120.4	11%

