



**COON CREEK**  
WATERSHED DISTRICT

**2024-2033  
Comprehensive  
Watershed  
Management Plan  
Summary**





# Outline



AUTHORIZATION



CURRENT CONDITIONS  
AND PRIORITIES



PLAN GOALS AND  
STRATEGY



ESSENTIAL TASKS



RISKS AND CONCERNS

# Authorization



Plan Development: under MS 103B and MR 8410



Public Input: 69 meetings, surveys, and workshops with the public and governments to gather input on priority issues



District Mission: to manage surface and groundwater systems and contributing land to provide for and balance the competing uses of development, drainage, flood prevention, and the protection and restoration of water quality and habitat for the benefit of our communities now and in the future.

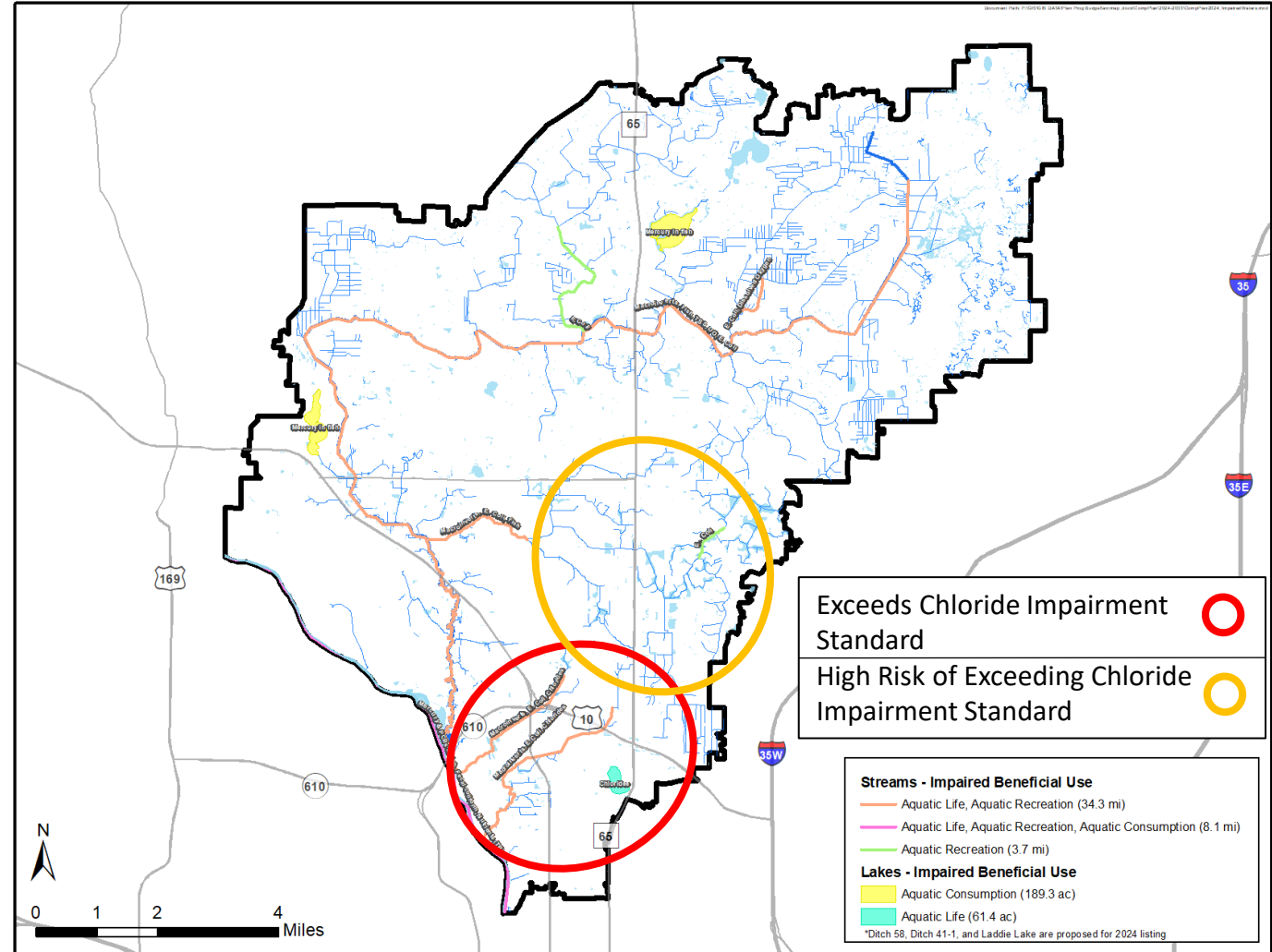
# Current Conditions and Priorities

## 11 Impaired Waters

- 3 impaired Lakes
- 8 impaired streams/ditches

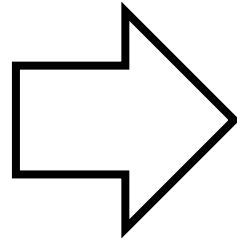
## Surface and groundwater interactions

- Quality: Chloride present in shallow groundwater
- Quantity: A potential lowering of water table



# Current Management Conditions

- Waters are impaired, flood risk is increasing presenting a clear and present risk to the public health, safety, and welfare
- Resources at risk of not providing beneficial uses
- Pollutant reductions to impaired waters required by EPA via TMDLs
- Must address TMDLs by 2045 (estimated cost >\$100 million)



## Central Water Management Problem

How do we sufficiently fund, and staff the needed water management efforts while effectively dealing with today's problems and achieving the 2045 deadline for attaining TMDL reductions?

# Plan Goals and Strategy

## Watershed-wide Goals

Improve the physical, chemical, and biological conditions of impaired streams

Improve the stability of the drainage network in the watershed

Further integrate intergovernmental collaboration of water management efforts rooted in defined water problems of the watershed.

## Strategy

Integrate leadership and control

Create and share common understanding of the central water management problem

Develop and pursue common legislative goals while adhering to strategic discipline

Implement programs that transform conflict, collaborate and unify effort, maintain legitimacy, and build capacity to pursue shared goals

Conduct specific collaborative tasks

# Essential Tasks



**Shape**: Inform, Involve,  
Engage, Inspect,  
Monitor, Model and  
Research



**Provide & Restore**:  
Operate, Maintain,  
Repair, Restore, Mitigate



**Protect**: Assist, Regulate,  
Enforce



**Stabilize and Sustain**:  
Ensure public health,  
safety and welfare;  
facilitate infrastructure;  
Restore natural capacity  
and capability

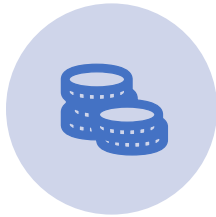
# Risks and Concerns



Funding



Prolonged debate



Rejection of effort due to cost



Transferring risk away from water quality and ground water

To alleviate these risks and concerns, the District intends to:

- \*\* Request Legislature must make more money available
- \*\* Push for a Staged TMDL deadline – moving deadline or incremental steps
- \*\* Differentiate water resources
- \*\* Update Plan at 5 yrs and smaller review 2.5 yrs





Questions?

